


- lunch spot
- Music

- Parks Furniture
- Movies outdoors
- Parks
- Art walking
- Rugby
- Football

P.O.

GAGE REESE .CCY



LOW INCOME HOUSING w/ 

STACKED
LOWER RETAIL
UPPER RESIDENTIAL

EXPAND ON WHAT WE HAVE

ACCESS

CONNECTION

ALLEY SIMILAR TO DOWNTOWN BASALT

VIEWS TO RIVER
VIEWS TO BLUFFS/MTN.

ROCKY MTS PERMACULTURE INSTITUTE

LOCAL

PEDESTRIAN

BIKE

PARK HOTEL

MARKET

GROW DOME

ACTIVITY/SPORTS TRAIL

BEACH

KAYAK PARK

PEDESTRIAN ENTRANCE

**RIVER WALK
RIVER RETAIL**

CONNECT RIVER WALKWAY / RIVER BRIDGE

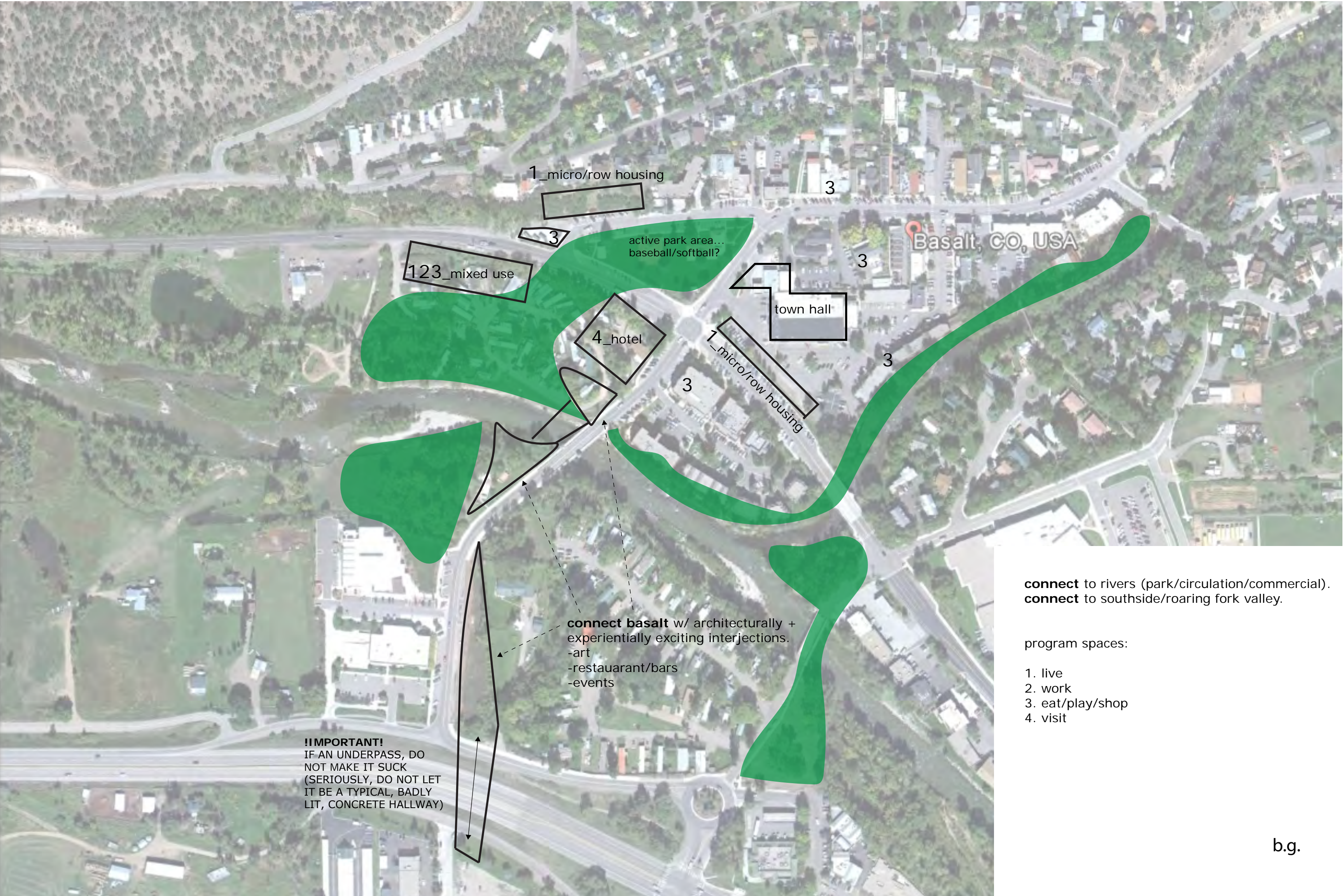
LIBRARY

STANDS VS. BUILDING

LEAVE RIVER UNTOUCHED FOR **FLY FISHING**

VEHICLE ENTRANCE





Basalt, CO, USA

1_micro/row housing

3

3

active park area...
baseball/softball?

123_mixed use

3

town hall

4_hotel

1_micro/row housing

3

3

connect basalt w/ architecturally +
experientially exciting interjections.
-art
-restaurant/bars
-events

!!IMPORTANT!
IF AN UNDERPASS, DO
NOT MAKE IT SUCK
(SERIOUSLY, DO NOT LET
IT BE A TYPICAL, BADLY
LIT, CONCRETE HALLWAY)

connect to rivers (park/circulation/commercial).
connect to southside/roaring fork valley.

program spaces:

- 1. live
- 2. work
- 3. eat/play/shop
- 4. visit

GENERAL THOUGHTS:
 -ENHANCE PEDESTRIAN PATHWAYS AND ADD CLEAR SIGNAGE TO PEDESTRIAN PATHS
 -LOCATE PARKING AREAS IN CONVINIENT LOCATIONS TO ALLOW PEOPLE TO DITCH CARS AND GET ONTO PEDESTRIAN PATHWAYS
 -CREATE 'LOOPS' SO THAT PEOPLE CAN CREATE SHORT TO LONG JOURNEYS THROUGH TOWN ON FOOT

START HIGH DENSITY COMMERCIAL W/ RESIDENTIAL ABOVE HERE TO EXTEND DOWNTOWN TOWARDS EL JEBEL





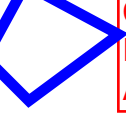


TOWN POOL, ADD OTHER RECREATION FACILITIES?

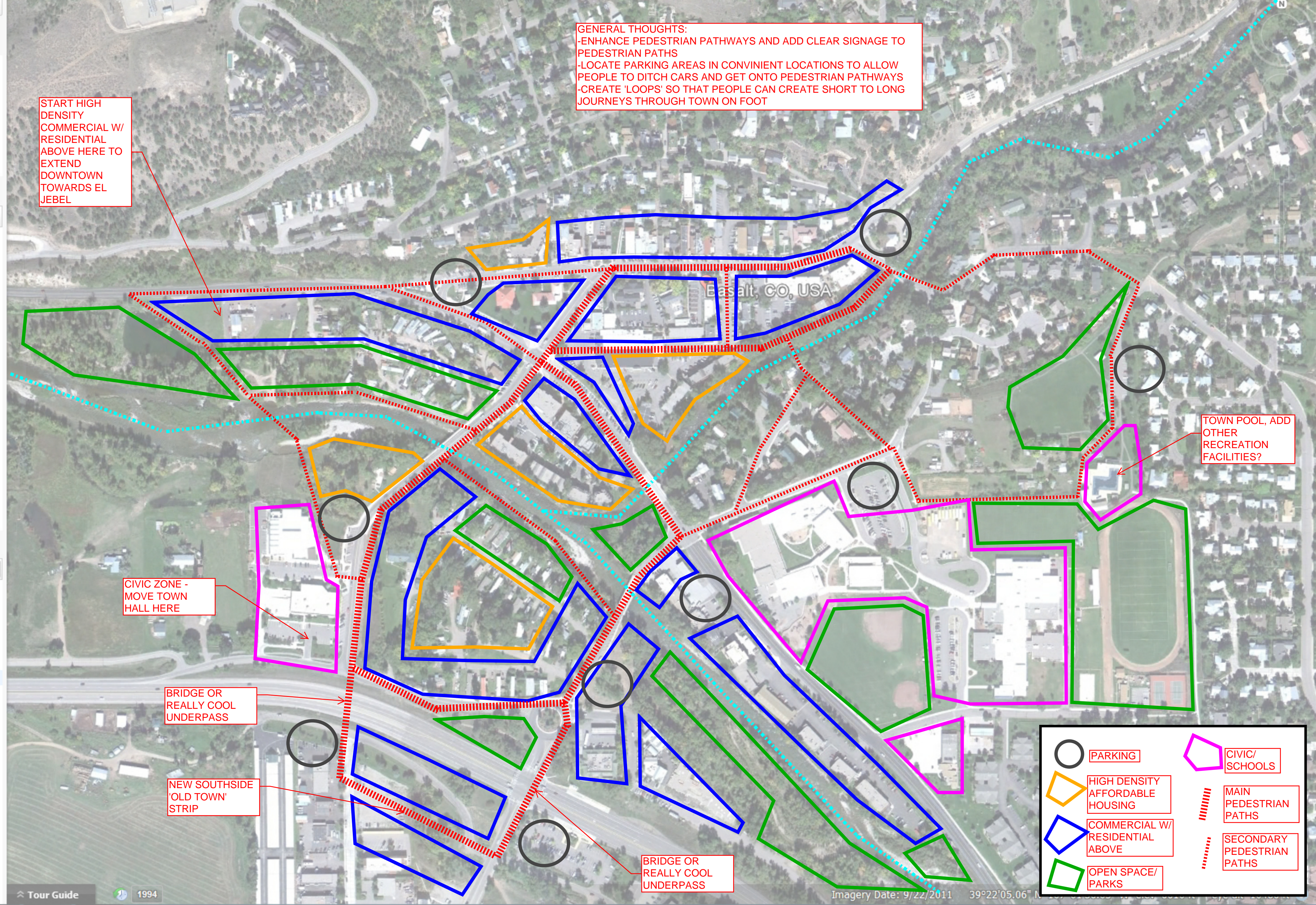
CIVIC ZONE - MOVE TOWN HALL HERE

BRIDGE OR REALLY COOL UNDERPASS

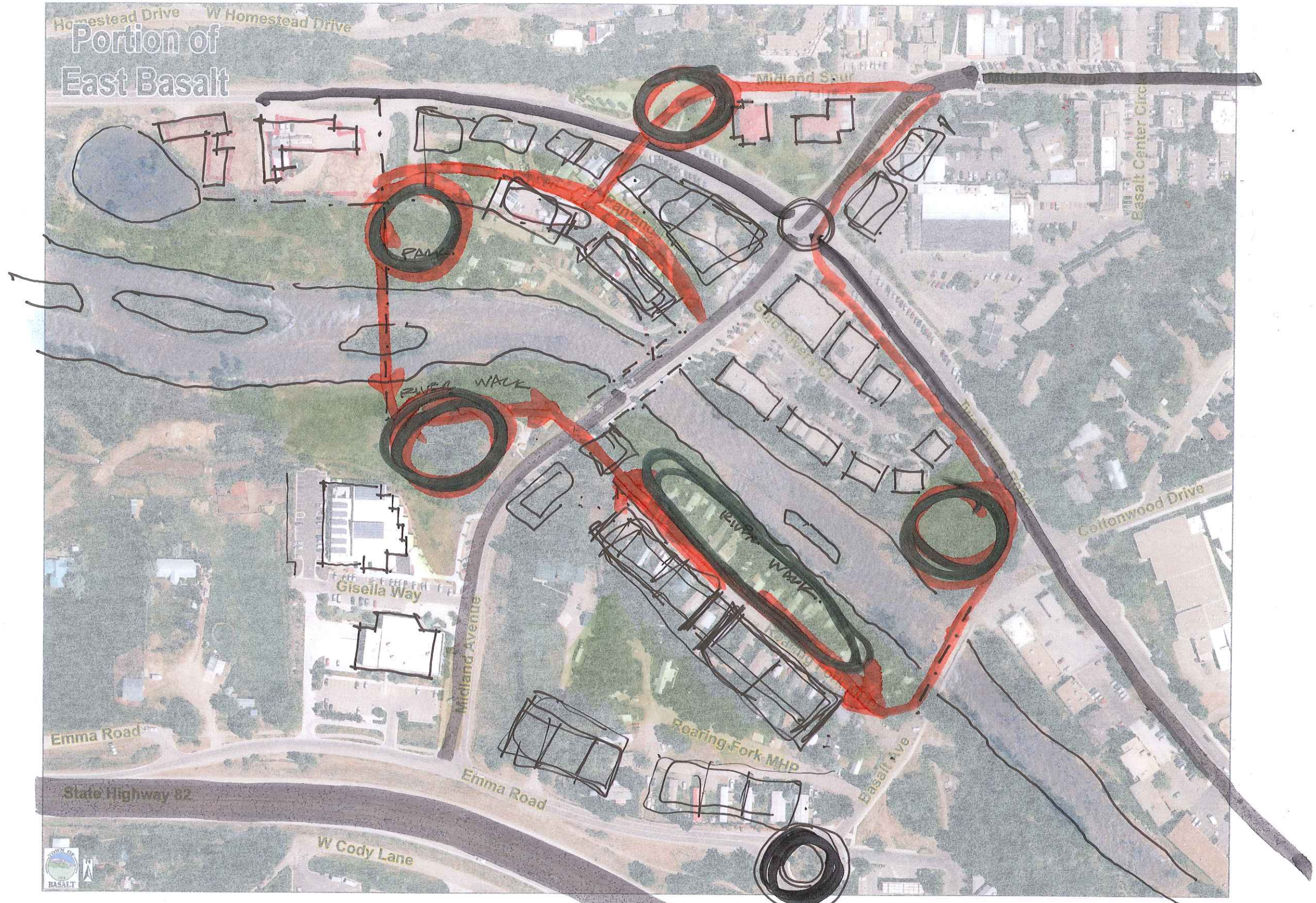
NEW SOUTHSIDE 'OLD TOWN' STRIP

BRIDGE OR REALLY COOL UNDERPASS

	PARKING		CIVIC/ SCHOOLS
	HIGH DENSITY AFFORDABLE HOUSING		MAIN PEDESTRIAN PATHS
	COMMERCIAL W/ RESIDENTIAL ABOVE		SECONDARY PEDESTRIAN PATHS
	OPEN SPACE/ PARKS		



Portion of East Basalt



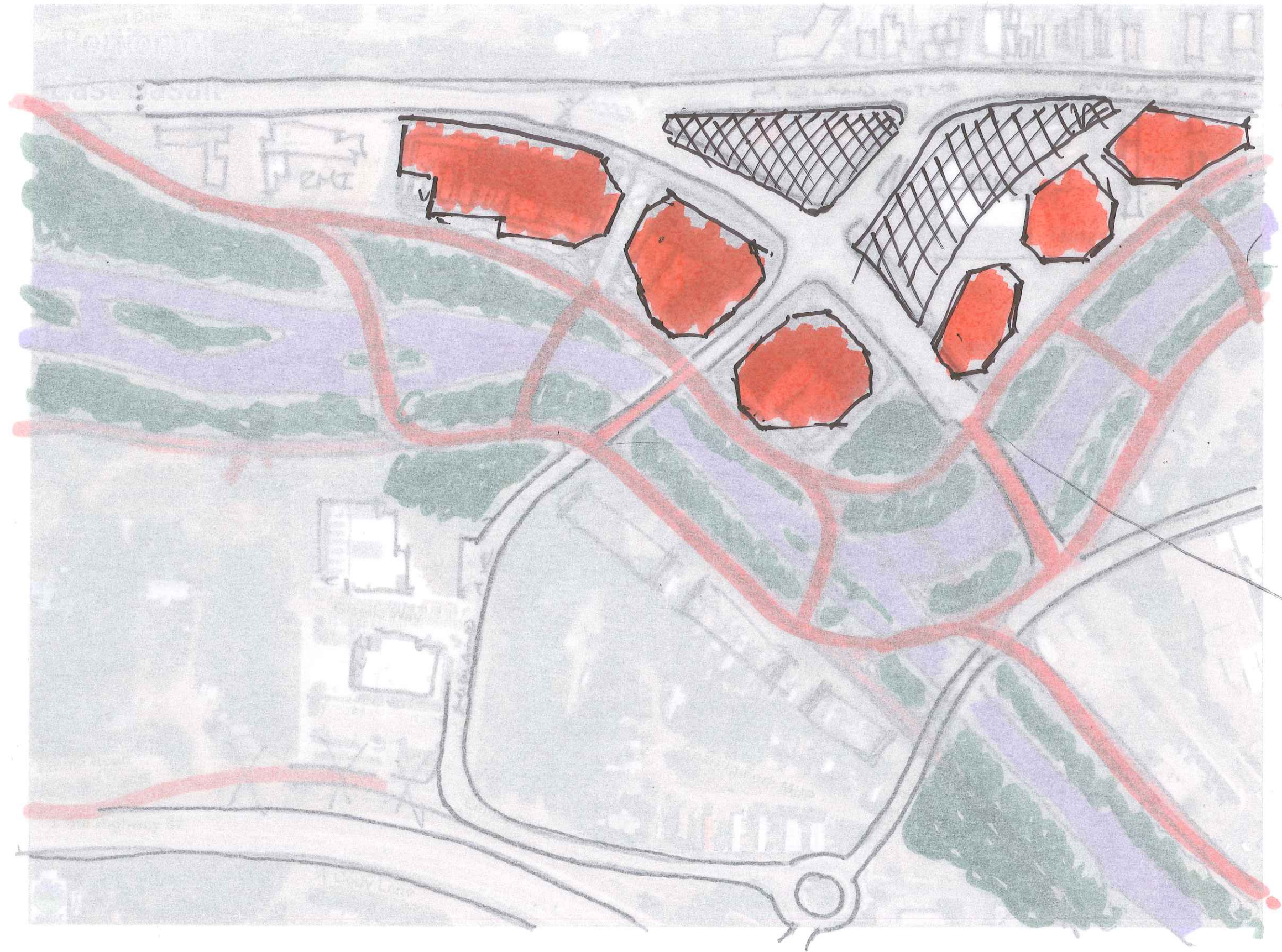
- MINIMIZE CAR THROUGHFARE
- NODES ALONG RIVER → PEDESTRIAN CONNECTION
- FOCUS ON PEDESTRIAN CIRCULATION
 - CONNECTED GREEN SPACES.



M-SMITH



MUSCOW
- EGY
ARCHITECTS.



 PARKING



3 STORY MIXED USE W/ ~~WOOD~~
COMMERCIAL/OFFICE/RESIDENTIAL (SUBSITIZED)

 GREEN SPACE/PARK
BASE MAP W/ EXISTING
PEDESTRIAN PATHS