

River Center

RMI.

Public Access Space

Access Path

Professional Skate Park

Ice Park

Park

Hotel

Natural History

Town Hall & ...

Round Boat

Access Path

Amateur





River Center

RMI.

Park  
(Grass)  
- open space

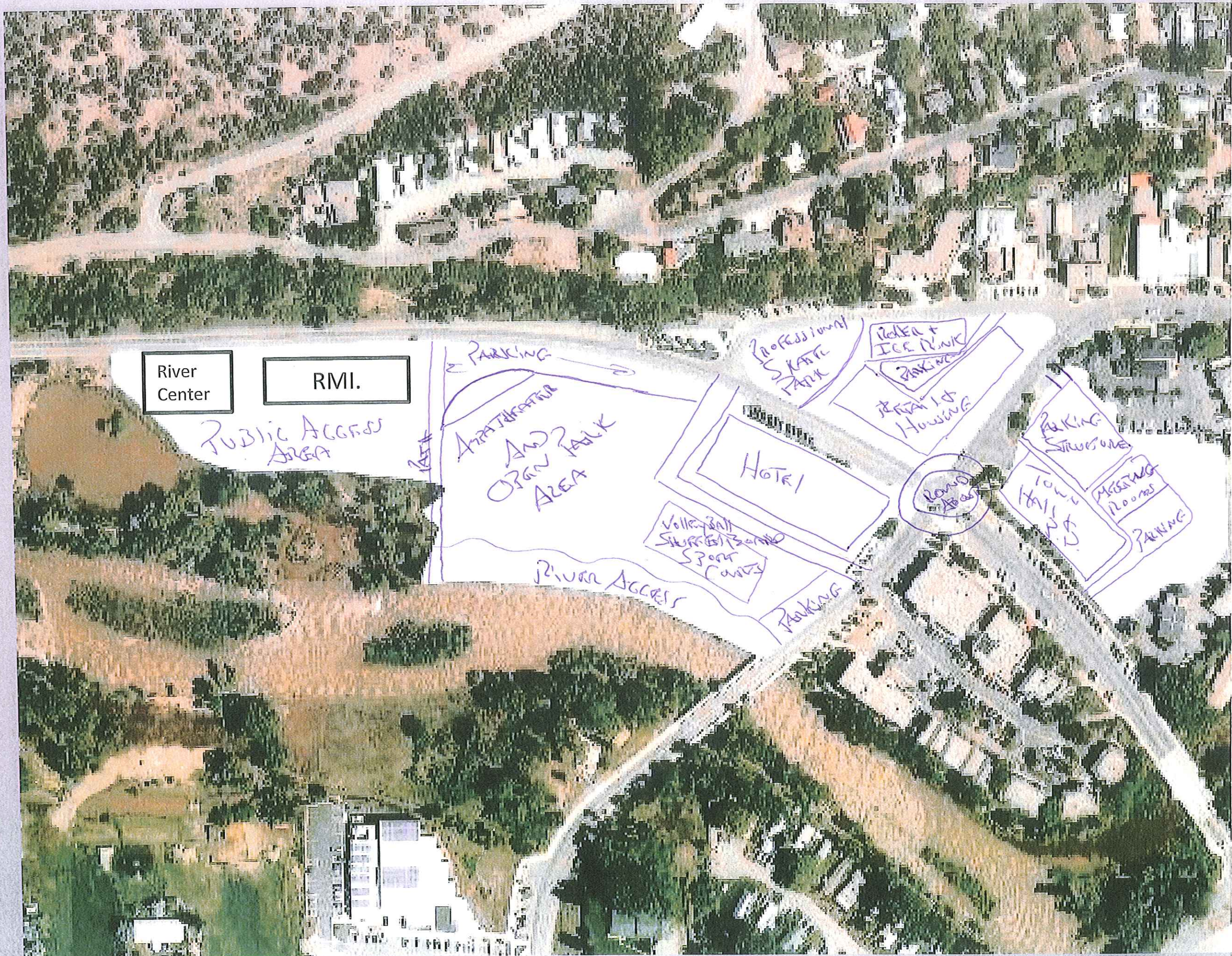
River Walk (with seating)

Restyantes  
(seating on River)

Town Hall

Hotel/  
Shops/  
Grocery





River Center

RMI.

Public Access Area

PARKING  
APARTMENTS  
AND?  
OPEN PARK AREA

Professional SKATE PARK

Ice Rink  
PARKING

RETAIL Lot HOUSING

HOTEL

ROAD Area

PARKING STRUCTURE  
HOTEL  
PARKING

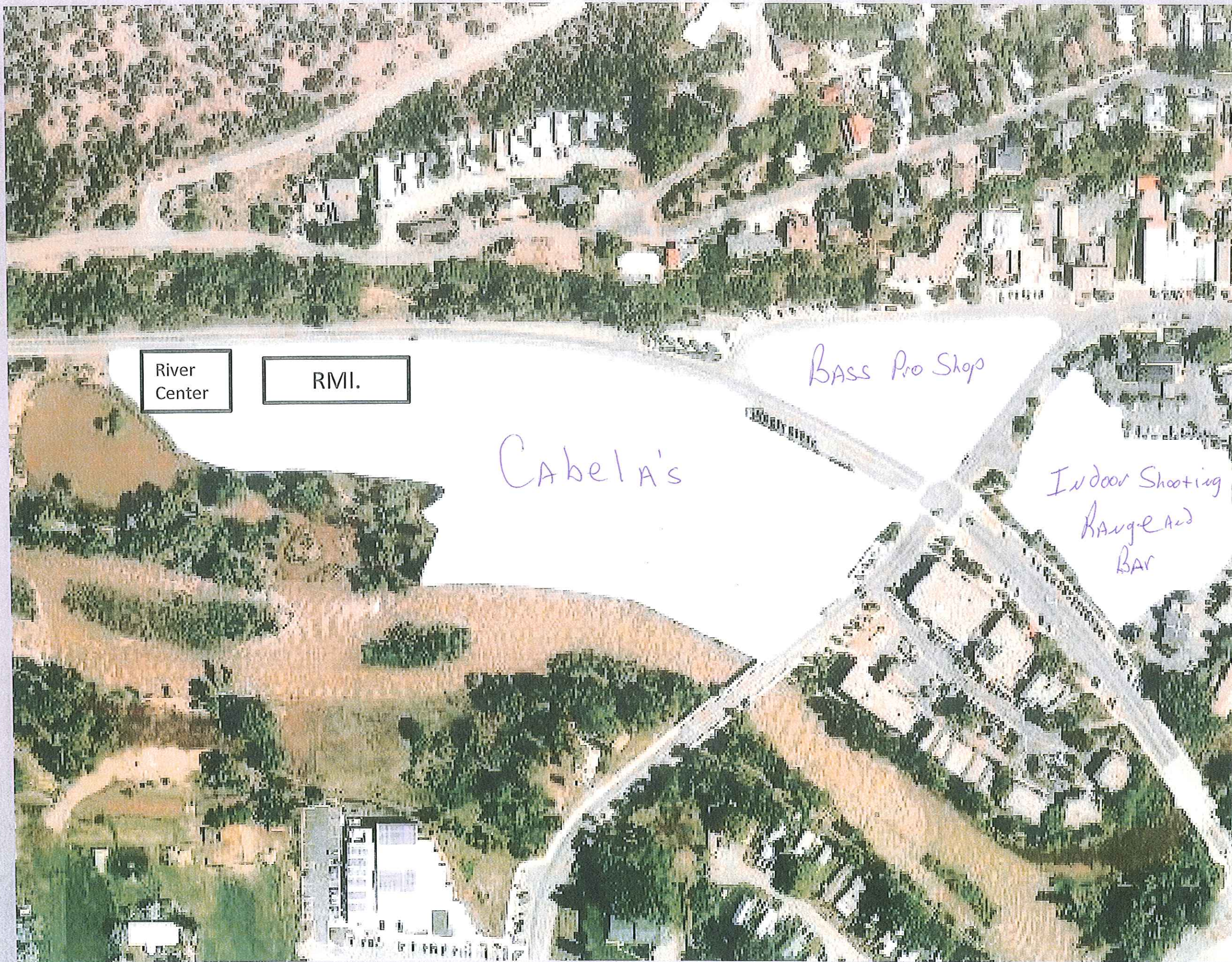
MEETING ROOMS  
PARKING

Volleyball  
SURFBOARD  
SPORT Courts

River Access

PARKING





River Center

RMI.

Bass Pro Shop

Cabela's

Indoor Shooting Range and Bar



# **Our Town Input – Basalt Town Staff**

May 9, 2014

Facilitator: Paul Andersen

Discussion during town staff lunch – Town Hall

- Parking is the first concern of Police Chief.
- Police will need to patrol any new parks – on foot and bikes.
- Labor costs for the town will increase with new infrastructure to maintain.
- There will be more trash cans to empty.
- There will be more dogs to control because people bring their dogs to parks.
- The water well on that property is a critical source for the town and will need to be accessed and protected.
- A central building is needed for town offices, public works, etc.
- The town should pay attention to existing problems before venturing into new development: sidewalk connections, road repairs, drainage, aged water systems, drainage issues, etc.
- The entrances to town should be enhanced to make them not only functional but attractive: Two Rivers Rd. and the Frying Pan.
- Basalt needs a bike path like Carbondale's Crystal River Trail.
- Water supply has to be considered to provide for new growth and irrigation for parks.
- A whitewater park would draw spectators.
- Parks and developments should not be planned just for summer. We have six months of winter that require snow plowing and other concerns.
- Sidewalks should be eight feet wide to allow for snow.
- There will need to be a place to pile up the snow without having to truck it out of town.
- We need to respect the power of the river and expect floods that could destroy in-river structures.
- A river front park will need riparian plants. Both native and exotics may be planted in town gardens.
- The promise of more parks brings a level of excitement and also concern for the maintenance and staff required.
- The town will need to create more resources and hire more staff for new development.

- Add handicapped amenities.
- Include a dog wash.
- Larger parking lots to handle an increase of cars will require security for those cars.