



BUS DEPOT/INFO KIOSK

GREEN ROOF

TOWN POND--
FISHING DEMOS/ICE SKATING

MIXED SEATING OPTIONS

CURBLESS STREET FOR STORMWATER INFILTRATION
AND PEDESTRIAN ENHANCEMENT

TOWN COMMONS

RAIN GARDENS

CHAMBER OF COMMERCE/
INFORMATION CENTER WING

TOWN HALL

TOWN XERISCAPE GARDENS

STRING LIGHTS/BANNERS

EXISTING RESIDENTIAL

EXISTING 'SAXYS' BUILDING

MIDLAND MALL
POCKET RETAIL
PEDESTRIAN EXPANSION

HOTEL/RETAIL/
MIXED USE RESIDENTIAL

JAMES SURLS GALLERY/WYLY
STUDIO AND COMMUNITY GALLERY/
MIXED USE/ARTIST LOFTS

APPROX. LOCATIONS
OF EX. TREES TO
REMAIN (REMOVED FOR
GRAPHIC PURPOSES)

TOWN XERISCAPE
DEMONSTRATION GARDENS

TOWN POND--
FISHING DEMOS/ICE SKATING

OLD POND PARK

TOWN HALL

GREEN ROOF

CURBLESS FESTIVAL
STREET WITH OVERHEAD
LIGHTING AND BANNERS

EXISTING
RESIDENTIAL

EXISTING
'SAXYS' BUILDING

EXISTING
COMMERCIAL BUILDING

MIDLAND MALL
POCKET RETAIL
EXPANSION



POTENTIAL MIXED-USE
RESIDENTIAL

JAMES SURLS
SCULPTURE

POTENTIAL WYLY/
JAMES SURLS
GALLERY AND STUDIO

RIVER ART WALK

POTENTIAL MIXED-USE--
COLORADO MTN COLLEGE/RESIDENTIAL
LOFTS/RETAIL/RESTAURANT

POTENTIAL RETAIL/
RESTAURANT SPACE

POTENTIAL OUTDOOR
SEATING/CAFE TERRACE

POTENTIAL RETAIL/
RESTAURANT SPACE

GREAT LAWN/CONCERT VENUE

GRACIOUS STEPS
FOR SEATING

WHITewater PARK
WITH EDDIES AND POOLS FOR SWIMMING
AND BOATING

POTENTIAL HOTEL/MIXED USE/RESIDENTIAL/
RETAIL/OFFICE

BAND SHELL



JAMES SURLS
SCULPTURE/
COMMUNITY ART
IN RAIN GARDENS

HOTEL/RETAIL/
MIXED USE RESIDENTIAL

TOWN SQUARE/
COMMONS

BANNER STREET
LAMPS

SEATING
WALLS

TOWN POND

OVERHEAD
'STRING'
LIGHTING

STREET TREES

TOWN HALL

SPECIAL PAVING

ON-STREET PARKING



XERISCAPE GARDENS

BAND SHELL

RIVER ART WALK

ROARING FORK RIVER

EVENT LAWN

SCULPTURE

POTENTIAL RESIDENTIAL LOFTS/
MIXED USE

POTENTIAL ART/
COMMUNITY USE

POTENTIAL MIXED USE/
RESTAURANT/TRETAIL

COMMUNITY PUBLIC
OPEN SPACE TERRACE



SIGNAGE AND WAYFINDING ELEMENTS ARE EMBEDDED IN THE DESIGN

ICONIC BRIDGE STRUCTURE VISIBLE FROM DOWNTOWN AND HIGHWAY 82 BECKONS VISITORS TO EXPLORE THE RIVER TRAILS

WAYSIDES ALONG BRIDGE STRUCTURE PROVIDE SEATING OPPORTUNITIES AS WELL AS RIVER VIEWING AND FISHING

RECLAIMED/RESTORED NATURAL RIVERBANK FOR HABITAT AND AESTHETICS

EXISTING BASALT LIBRARY BUILDING

WAYSIDES ALONG BRIDGE STRUCTURE PROVIDE SEATING OPPORTUNITIES AS WELL AS RIVER VIEWING AND FISHING



↑
LIBRARY
WILLITS

ICONIC BRIDGE ELEMENTS

POTENTIAL RESIDENTIAL
ACROSS RIVER--
TRAIL CONNECTION TO WILLITS

SEATING ELEMENTS
AND ALCOVES ALONG BRIDGE
PROVIDE SOCIAL SPACES
ALONG THE TRAIL

NATURALIZED, RESTORED RIVER
BANK PROVIDES AREAS FOR ACCESS
AS WELL AS OPPORTUNITIES
FOR WILDLIFE HABITAT

AMPLE SIGNAGE IDENTIFIES
EXERCISE (REFLEXOLOGY) STATIONS,
WAYFINDING, AND INTERPRETIVE
ELEMENTS

MULTI-USE ORIENTED
TRAIL SURFACE WITH CONNECTIONS TO
DOWNTOWN BUSINESSES, NEIGHBORHOODS,
AND ATTRACTIONS



ENHANCED/REPAIRED ROAD] PAVING WITH REDUCED LANE WIDTHS AND ELIMINATION OR REDUCTION OF CENTER LANE.

ENHANCED CROSSWALKS PRIORITIZE PEDESTRIAN CIRCULATION AND ACCESS OVER VEHICULAR CIRCULATION. ENHANCED PEDESTRIAN CIRCULATION CREATES A MORE INVITING COMMERCIAL CORE AND VITAL PUBLIC SPACES.

PROVIDE RAIN GARDENS WHERE APPROPRIATE-- RAIN GARDENS ALLOW PERCOLATION OF STORMWATER WHILE SOFTENING THE STREET EDGE

ADA ACCESSIBLE RAMPS WITH TRUNCATED DOME WARNING STRIPS PROVIDE SAFE ROUTES FOR MOBILITY-CHALLENGED CITIZENS

INCREASED SIDEWALK WIDTH WITH PERIOD/SPECIAL PAVING THAT CONVEYS A SENSE OF IMPORTANCE

RAISED DECKING PROVIDES A SOFT, ENCLOSED PUBLIC-PRIVATE SPACE FOR DINING, RELAXING. AMPLE PASSIVE PARK SPACE AND SEATING ENCOURAGES STROLLING AND SHOPPING

DEDICATED BICYCLE LANES ALLOW CYCLISTS TO RIDE SEPARATELY FROM VEHICLE TRAFFIC ALONG MIDLAND AVENUE AND BEYOND ALONG TWO RIVERS ROAD AND ALONG THE FRYING PAN RIVER CORRIDOR

STREET TREES IN GRATES REDUCE URBAN HEAT ISLAND EFFECT, PROVIDE BUFFER BETWEEN PEDESTRIAN ZONE AND VEHICULAR ZONE WHILE PROVIDING A SENSE OF ENCLOSURE AND SHADE

PERMEABLE PAVERS ALLOW STORMWATER TO PENETRATE INTO THE GROUND, RECHARGING THE WATER TABLE AND CLEANSING RUNOFF AND MINIMIZING DEMAND ON UNDERGROUND UTILITIES AND TREATMENT PLANTS



IMPROVED
HANDICAPPED
ACCESSIBILITY
AND CROSSING

MODULAR
PLANTERS BUFFER
ROAD FROM PARKLET SPACE

MODULAR CAFE
SEATING

WOOD DECKING RAISED
TO MEET TOP OF CURB
AND SIDEWALK
FOR ADA ACCESS

REDUCED DRIVE
LANE WIDTHS
PROMOTE SLOWER
TRAVEL

BICYCLE LANE



BEFORE



AFTER

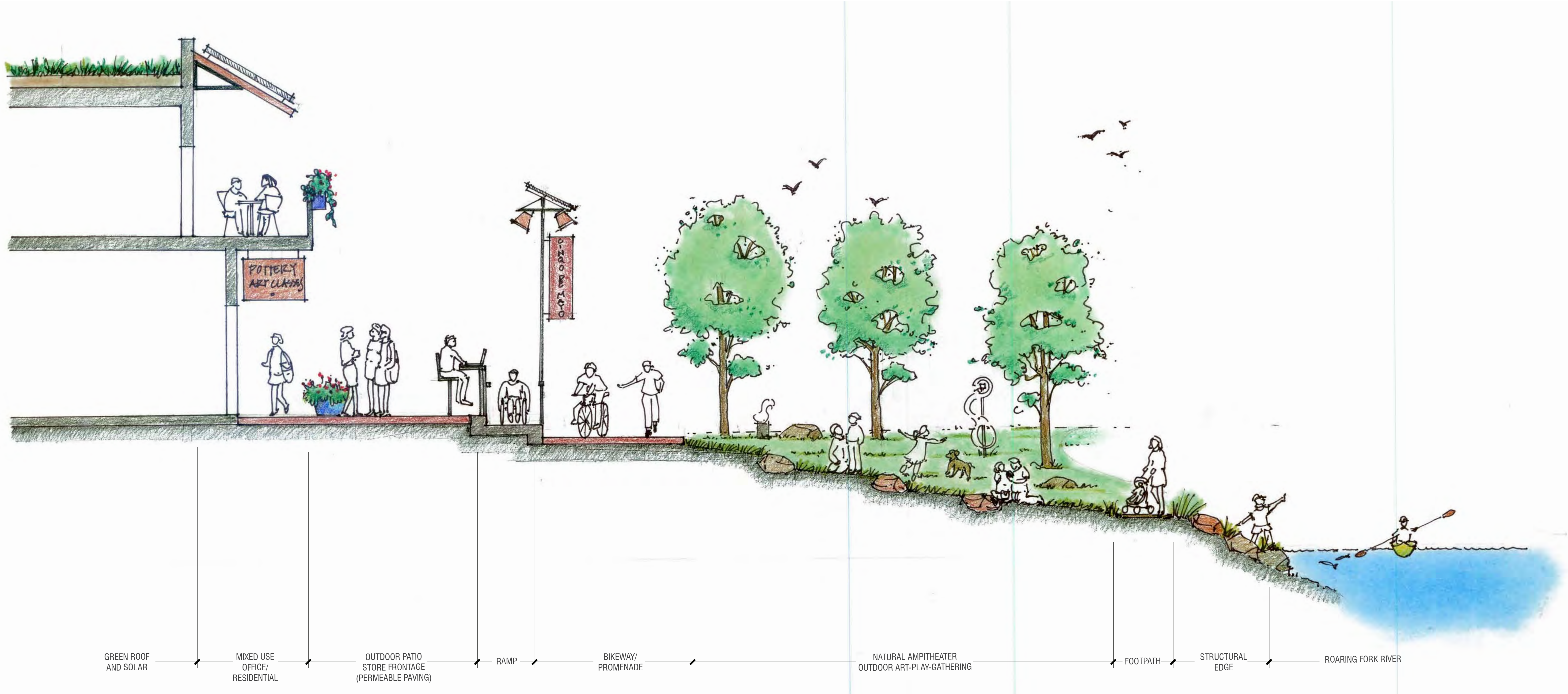


- VACATE EXISTING DRIVEWAYS
- PROPOSED ENHANCED PAVING AND PLANTING ELEMENTS
- PROPOSED CAFE SEATING POCKETS
- RAIN GARDEN(S)
- PROPOSED CLIMBING WALL OVER EXISTING RETAINING WALL
- POTENTIAL SCULPTURE LOCATION
- SEATING WALLS
- POTENTIAL POP-JET WATER FOUNTAINS
- SINGLE STOREY BOUTIQUE RETAIL
- TWO STOREY EXISTING RETAIL
- TWO STOREY RETAIL/RESIDENTIAL LOFTS

MIDLAND SPUR PROPOSED 'FESTIVAL STREET'

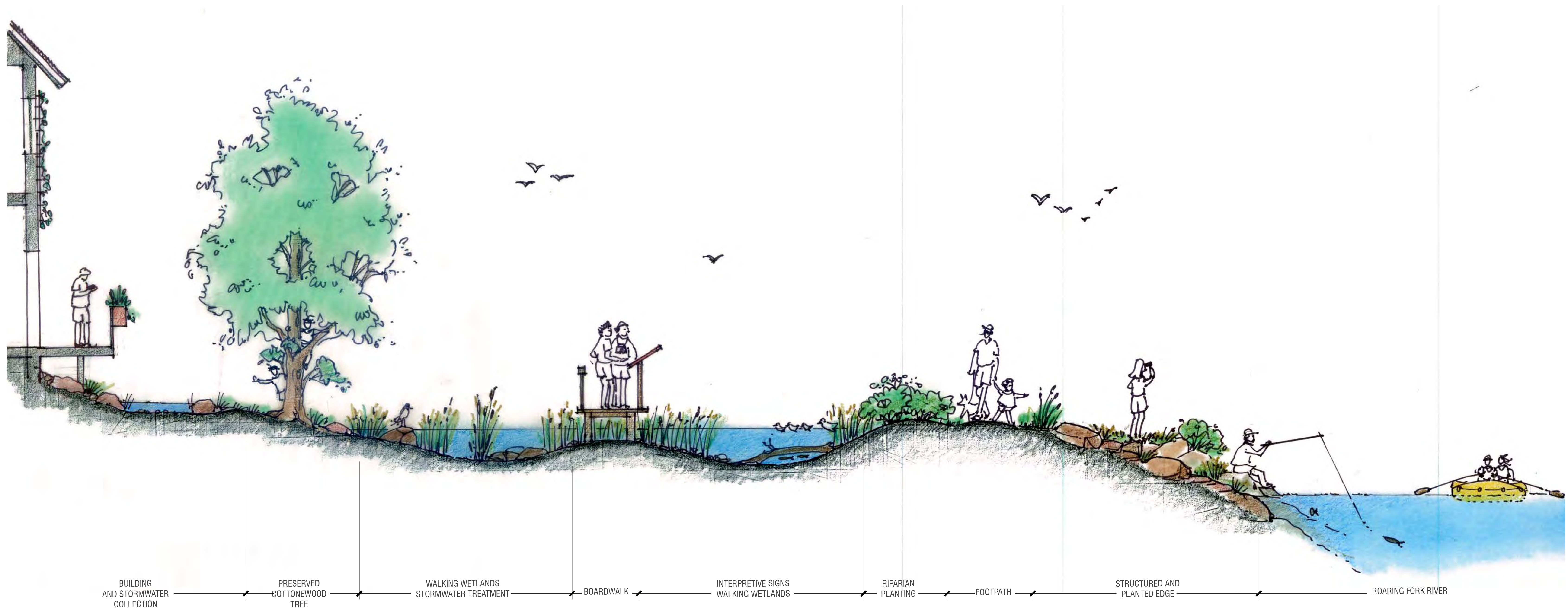


EXISTING MIDLAND AVE. WITH ENHANCED RAIN GARDENS/ STORMWATER FEATURES/NARROWED LANES/ENHANCED CROSSINGS

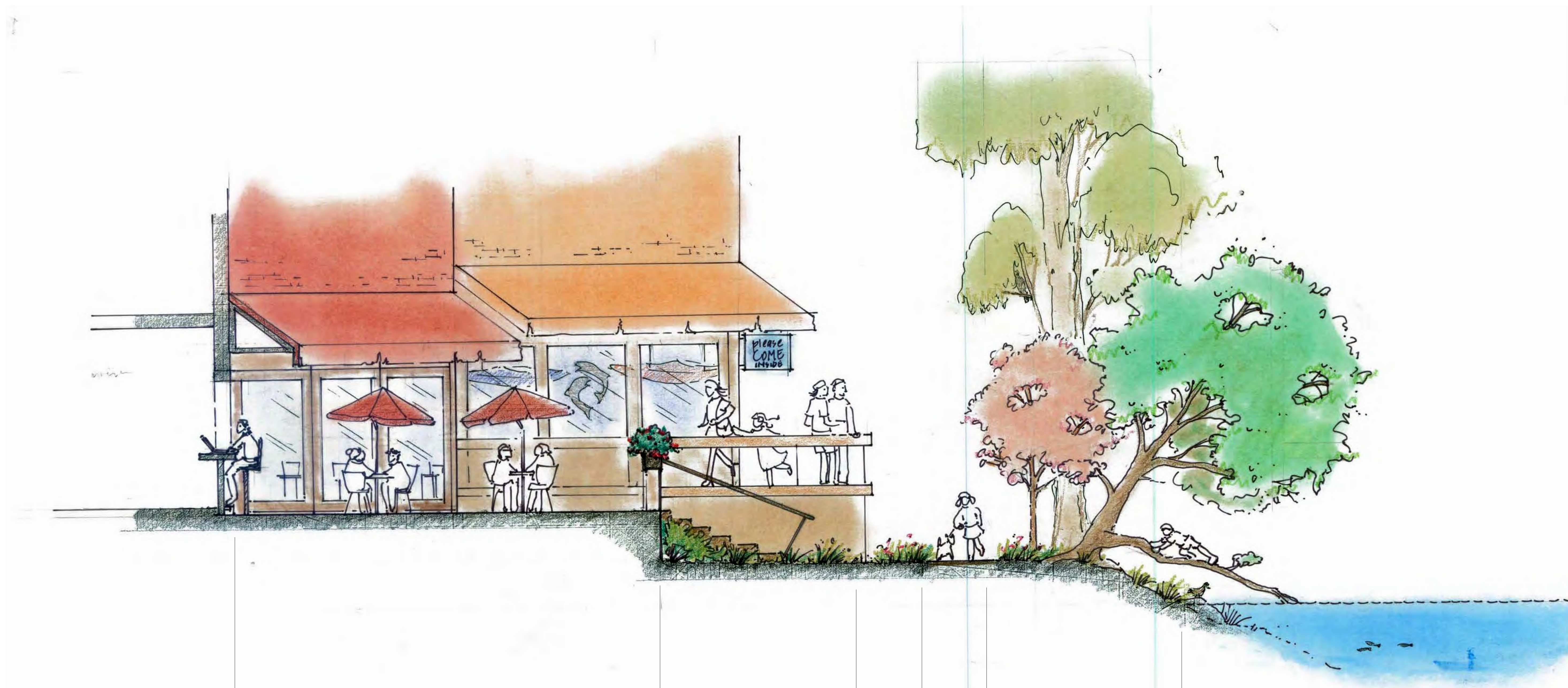


GREEN ROOF AND SOLAR MIXED USE OFFICE/RESIDENTIAL OUTDOOR PATIO STORE FRONTAGE (PERMEABLE PAVING) RAMP BIKEWAY/PROMENADE NATURAL AMPITHEATER OUTDOOR ART-PLAY-GATHERING FOOTPATH STRUCTURAL EDGE ROARING FORK RIVER

DRAWINGS BY: SUZANNE JACKSON
40BWORKS, BASALT CO



DRAWINGS BY: SUZANNE JACKSON
40BWORKS, BASALT CO



MIXED USE/
COMMERCIAL/OFFICE/
RESIDENTIAL

OUTDOOR PATIO
SEATING-MEETING-DINING

PUBLIC WALKWAY
STORE FRONTAGE

PLANTING

FOOT
PATH

NATURAL AREA
PRESERVED BUT ACCESSIBLE

RIVERWAY

DRAWINGS BY: SUZANNE JACKSON
40BWORKS, BASALT CO