

THE PARK HOTEL & RESIDENCES | public presentation 3.10.2015



CCY ARCHITECTS

Our Town Planning Process

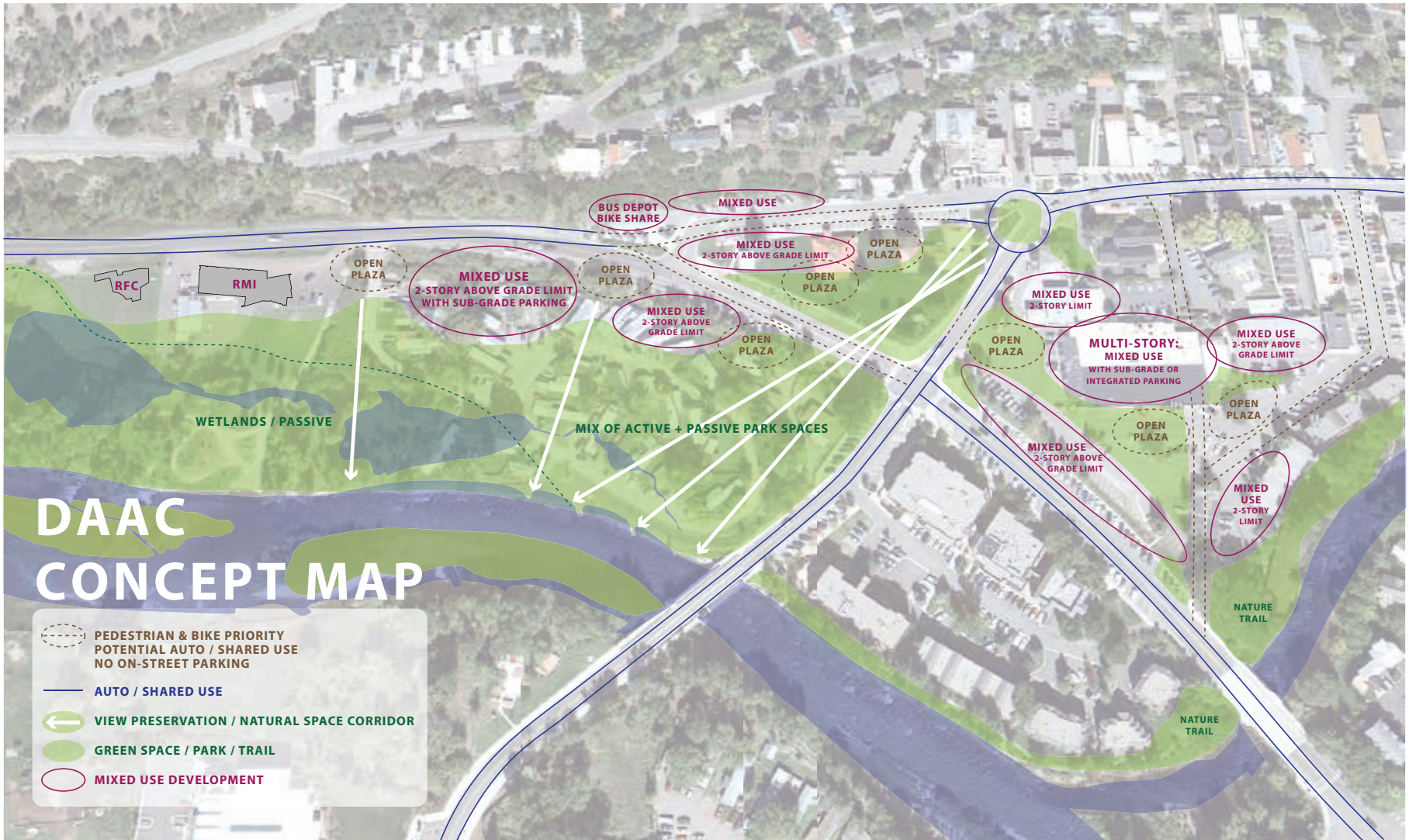


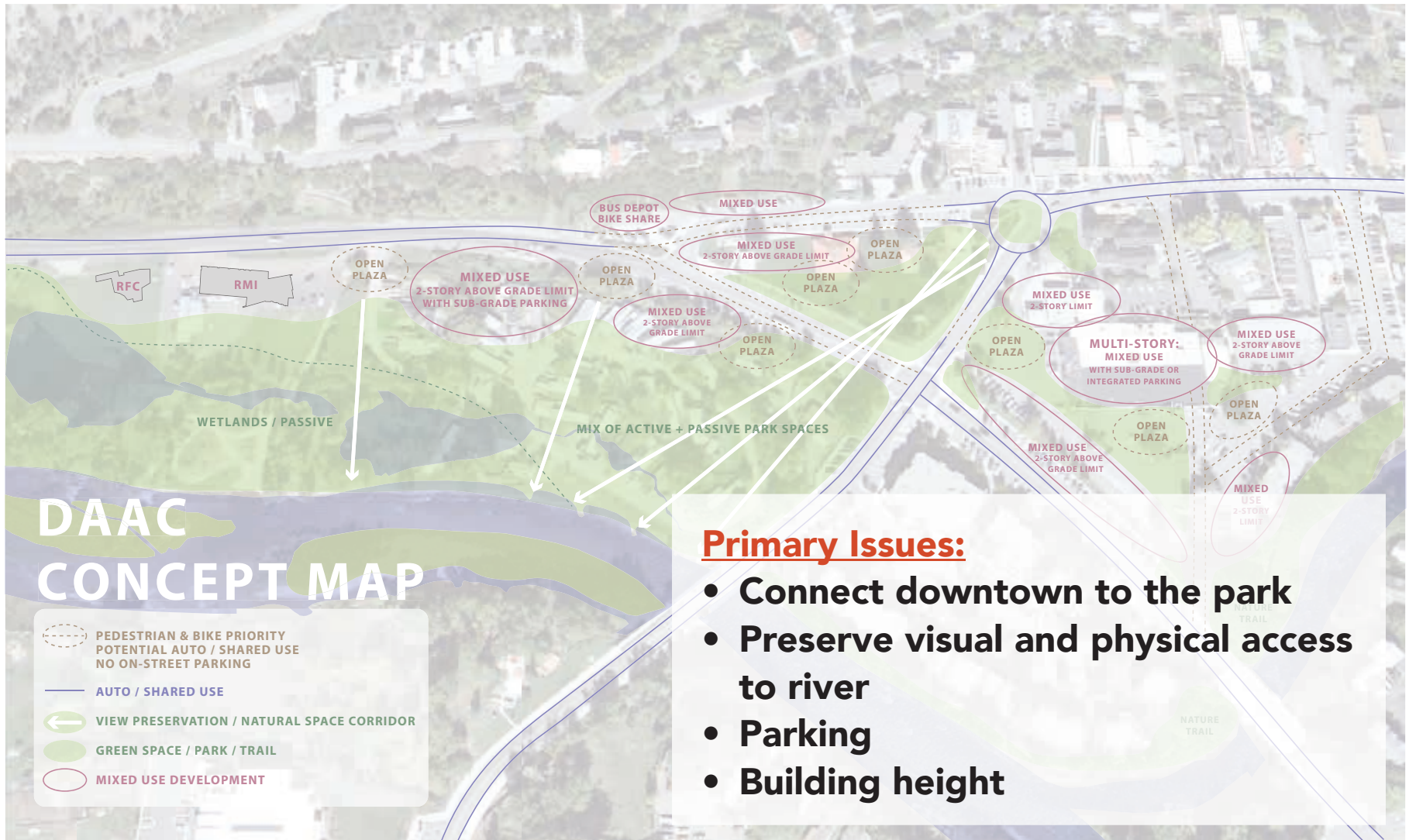
Downtown Area Advisory Committee (DAAC)



Guiding Principles:

1. Connectivity between Downtown and the Rivers through visual and physical access
2. Improves Lion's Park
3. Allows density to drive revitalization
4. Putting the "There-There"

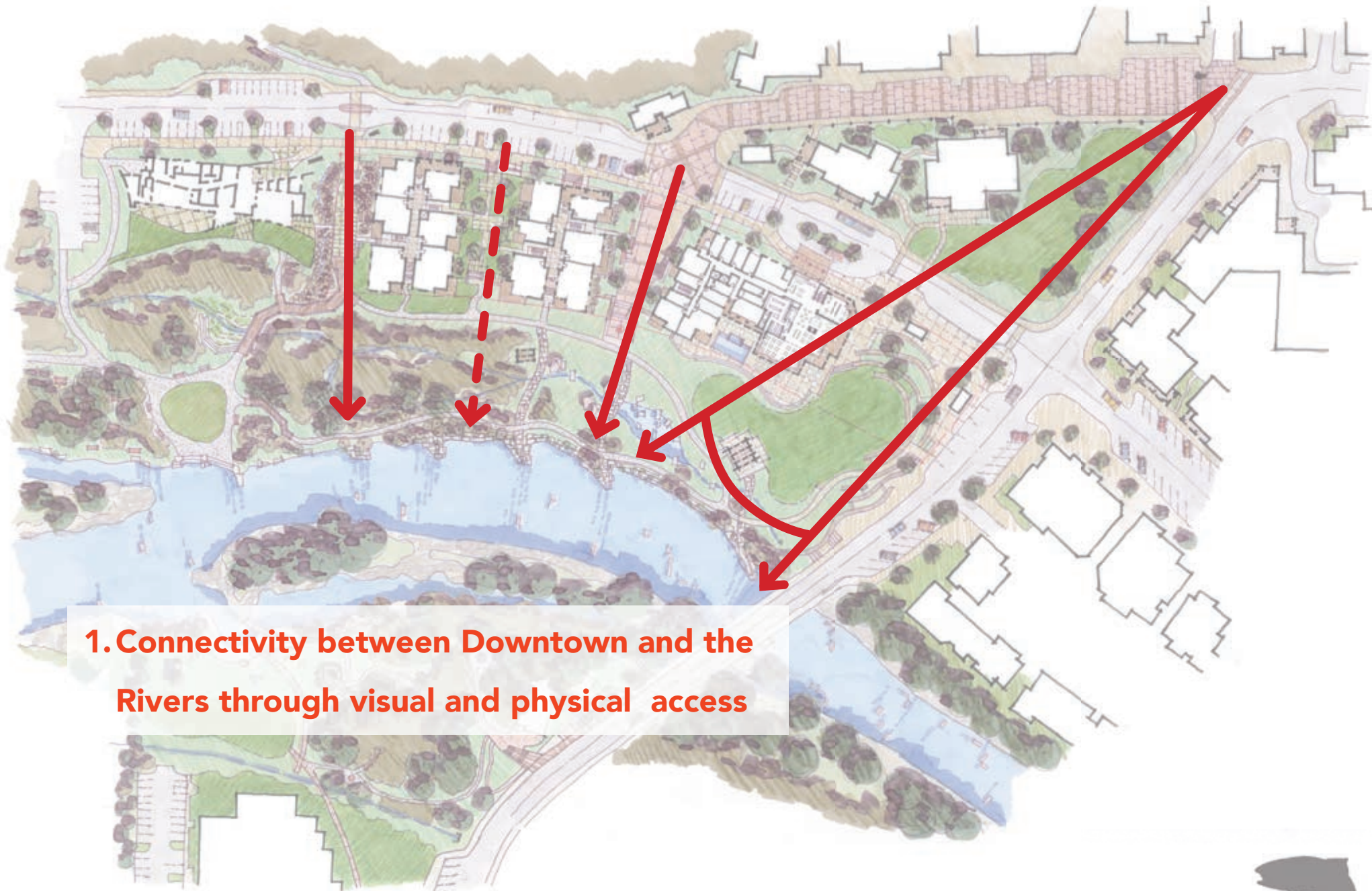




Concept Plan

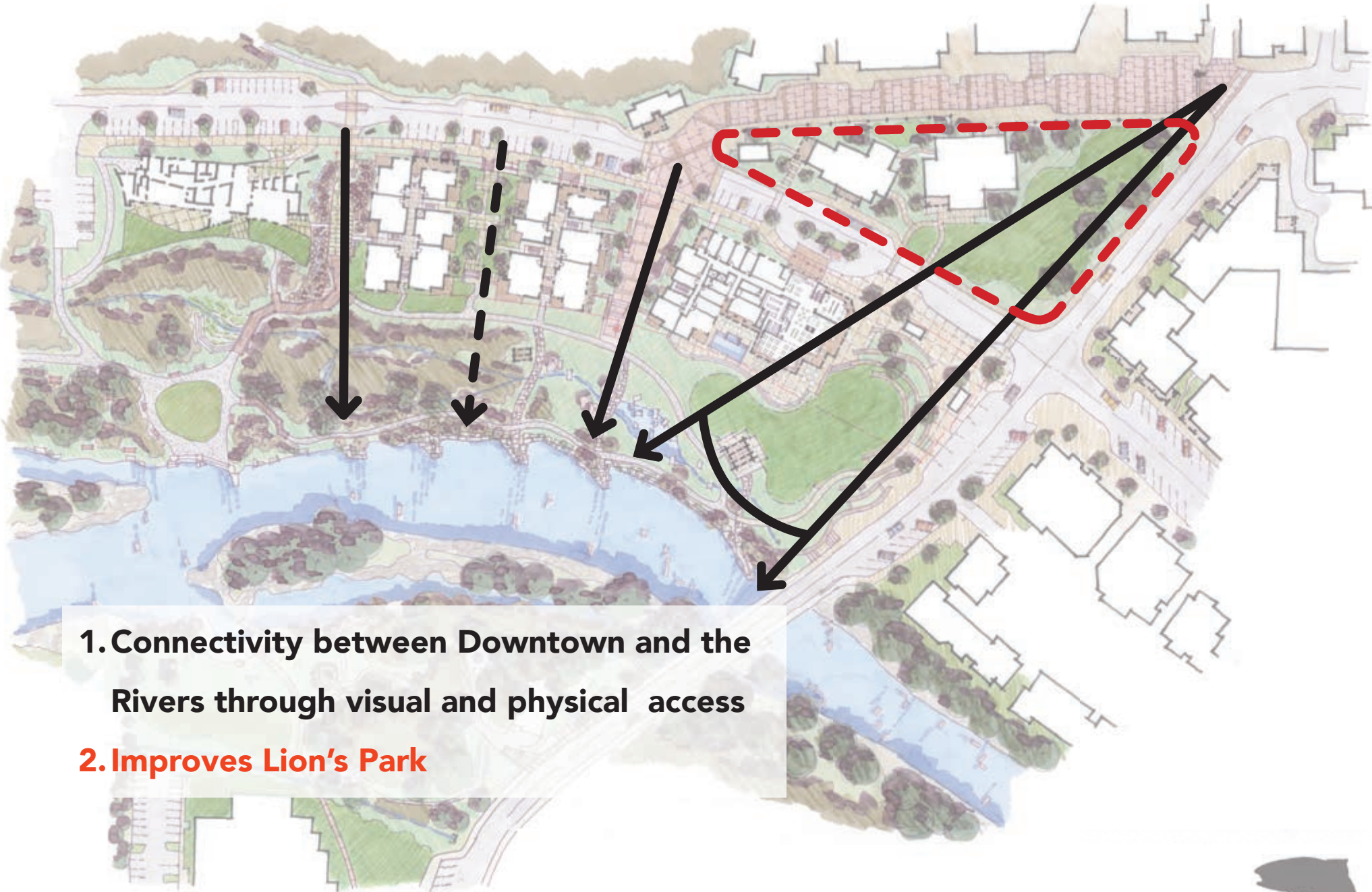


Guiding Principles



1. Connectivity between Downtown and the Rivers through visual and physical access

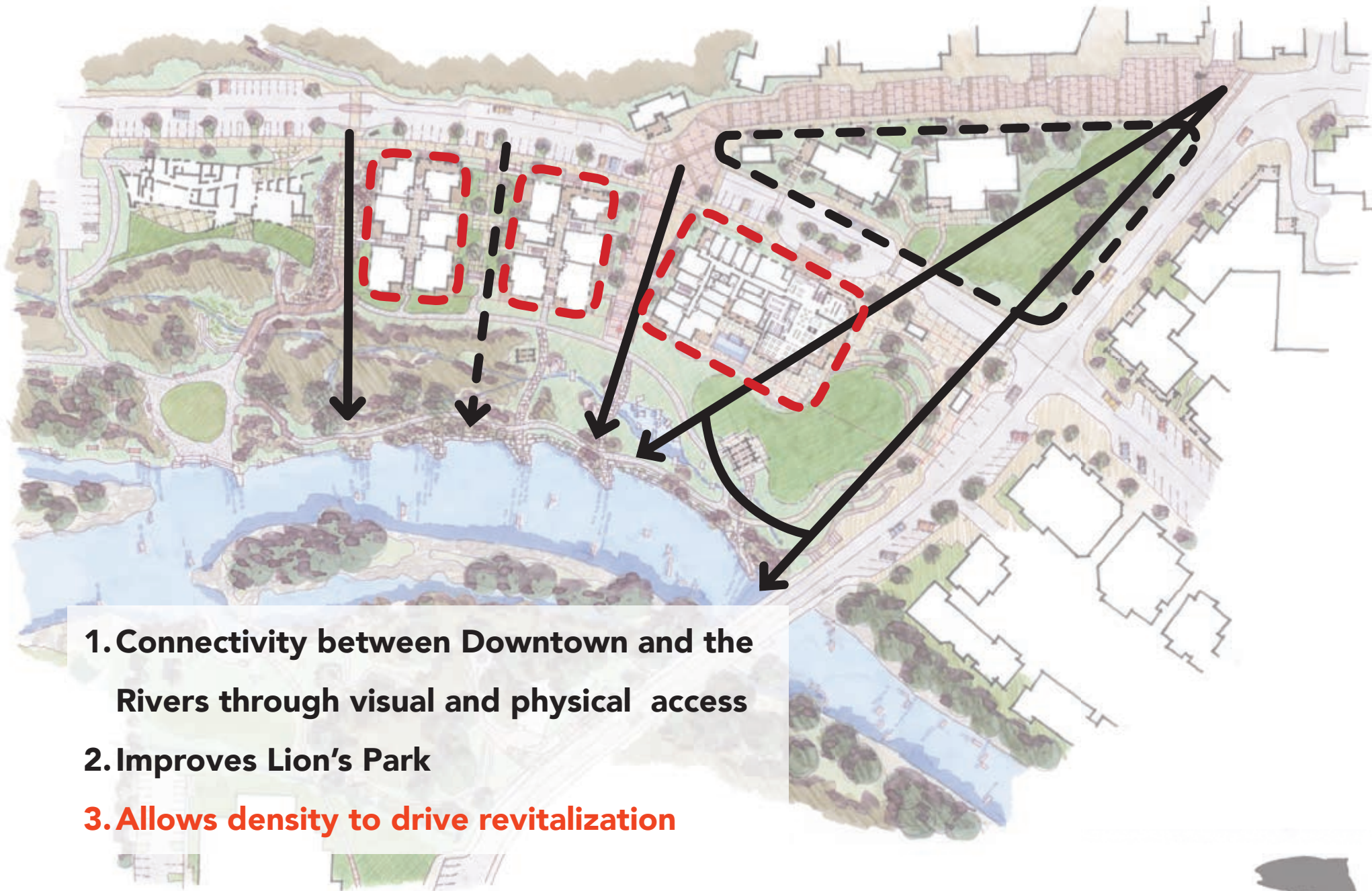
Guiding Principles



1. Connectivity between Downtown and the Rivers through visual and physical access

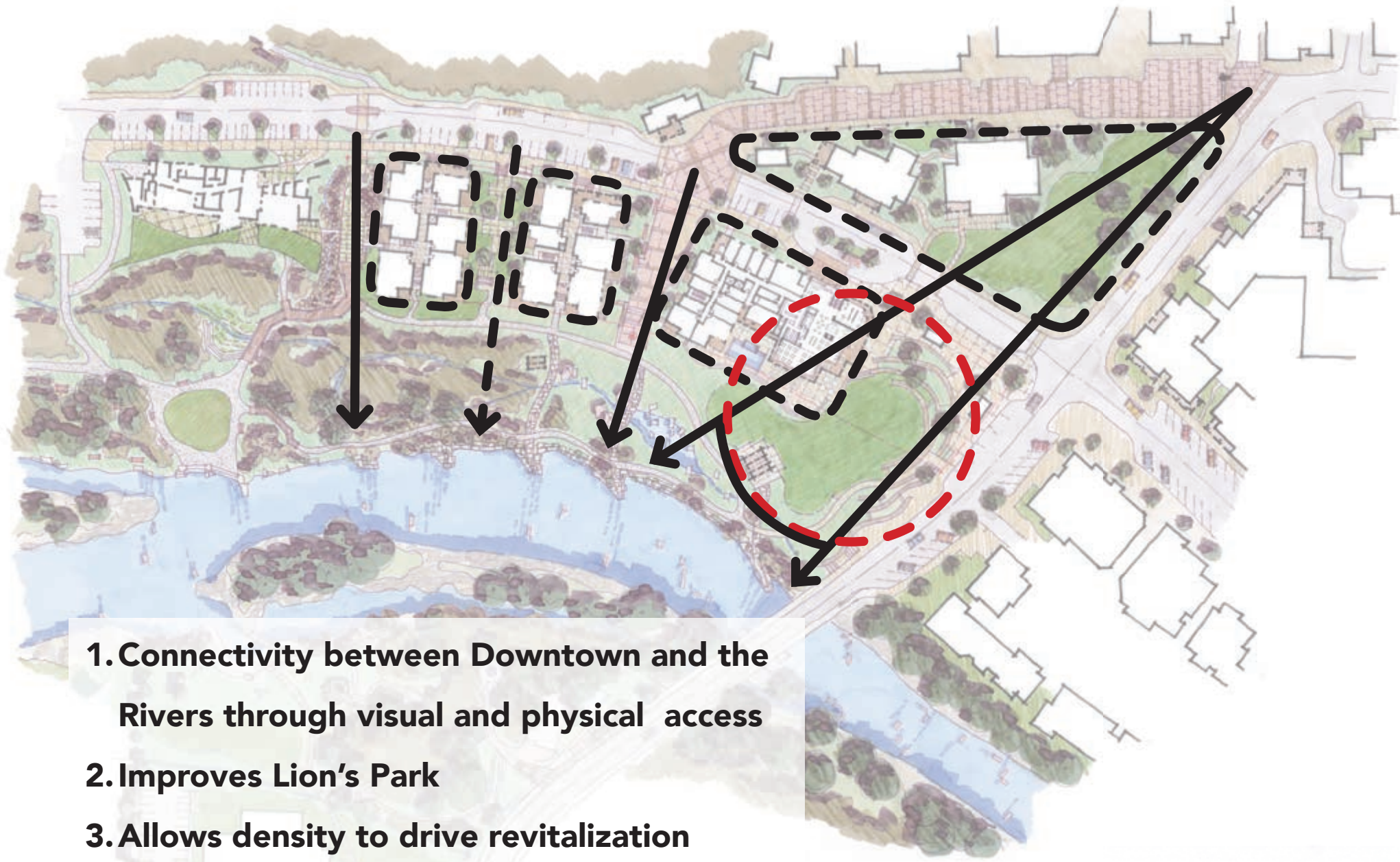
2. Improves Lion's Park

Guiding Principles



- 1. Connectivity between Downtown and the Rivers through visual and physical access**
- 2. Improves Lion's Park**
- 3. Allows density to drive revitalization**

Guiding Principles



1. Connectivity between Downtown and the Rivers through visual and physical access
2. Improves Lion's Park
3. Allows density to drive revitalization
4. Putting the "There-There"

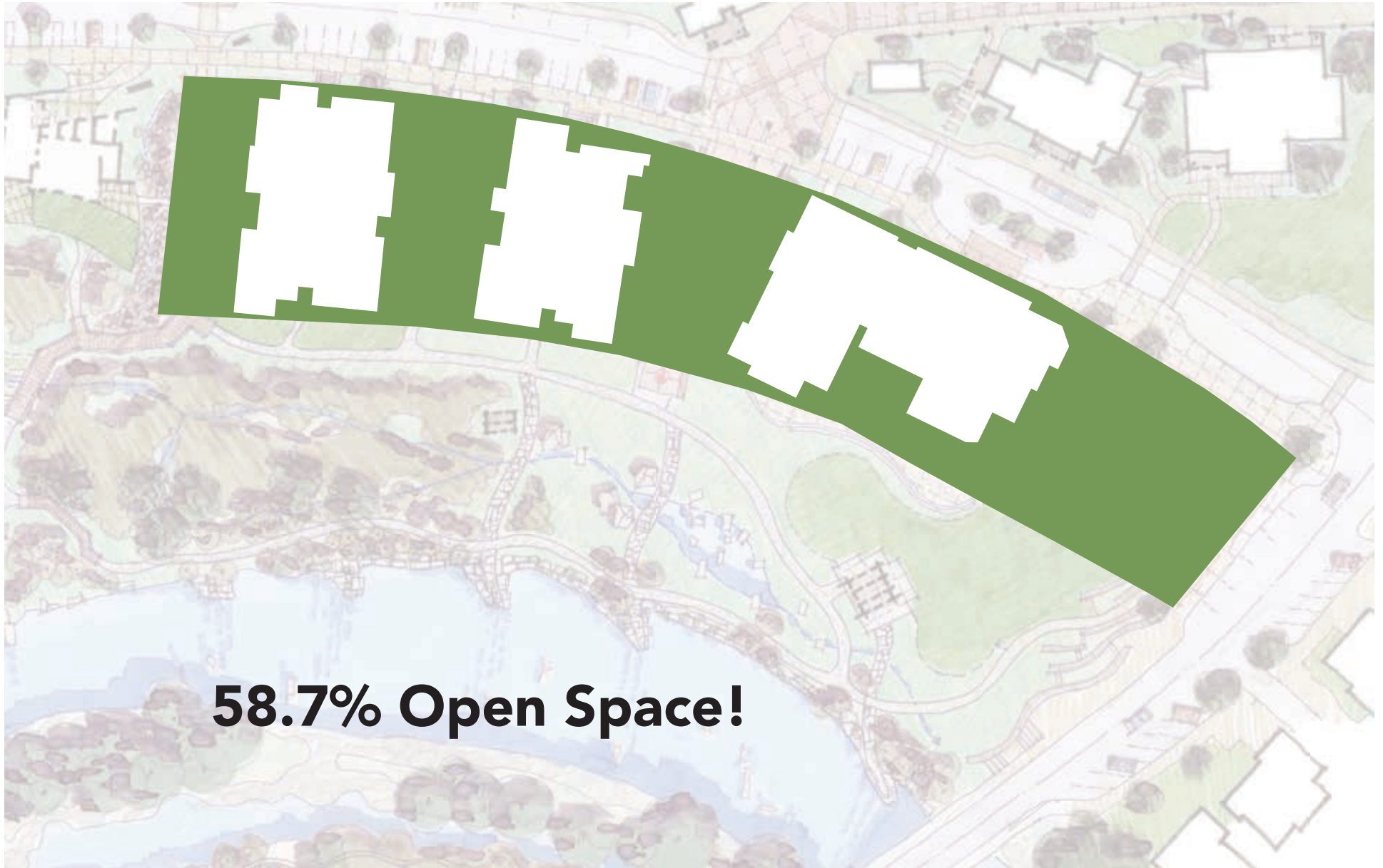
Parking



CDC Parcel - Open Space



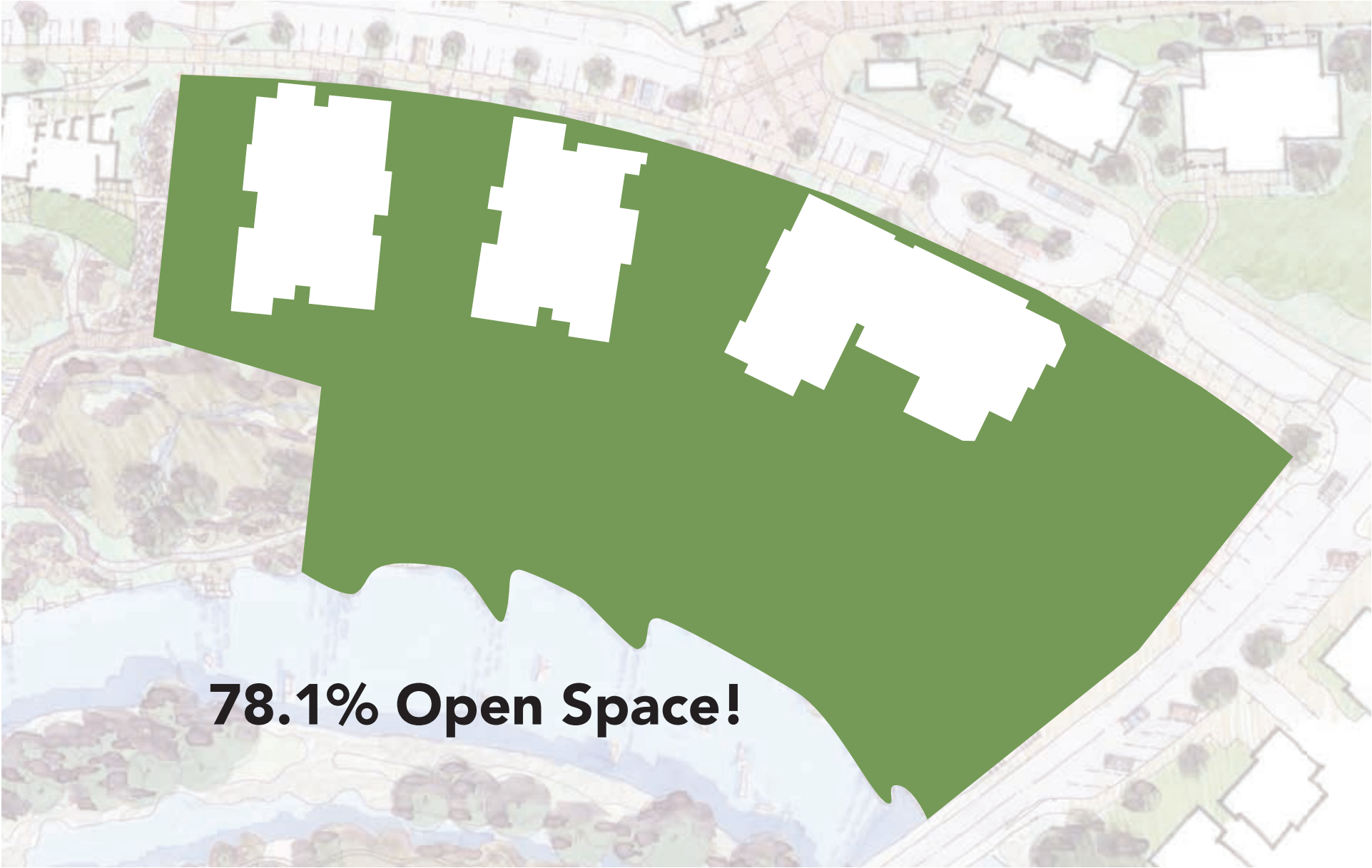
CDC Parcel - Open Space



Former Pan & Fork Site



Former Pan & Fork Site



78.1% Open Space!

Open Space



Open Space



**Mountain Fair's
1000 Fans Fit
Here!**

Concept Plan



Old Pond Park Public Access



Old Pond Park Public Access



Midland Spur Woonerf



Midland Spur Woonerf



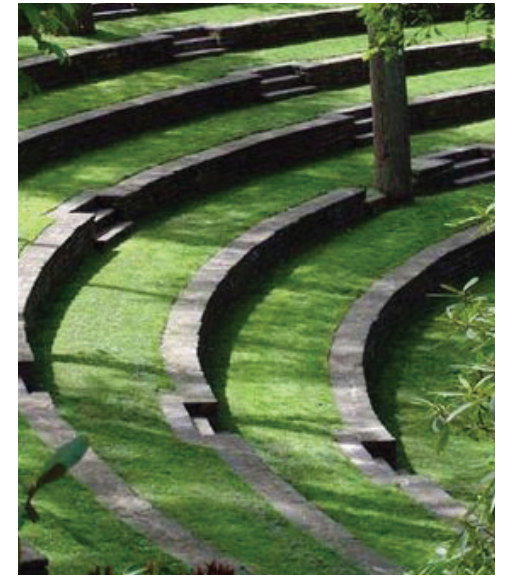
Riverfront Park & Hotel



Public Plaza



Amphitheater



Riverfront Park



Riverfront Park



Hotel Programming Public Spaces



Hotel Roof Terrace



Sopris Park, Carbondale



Riverfront Park



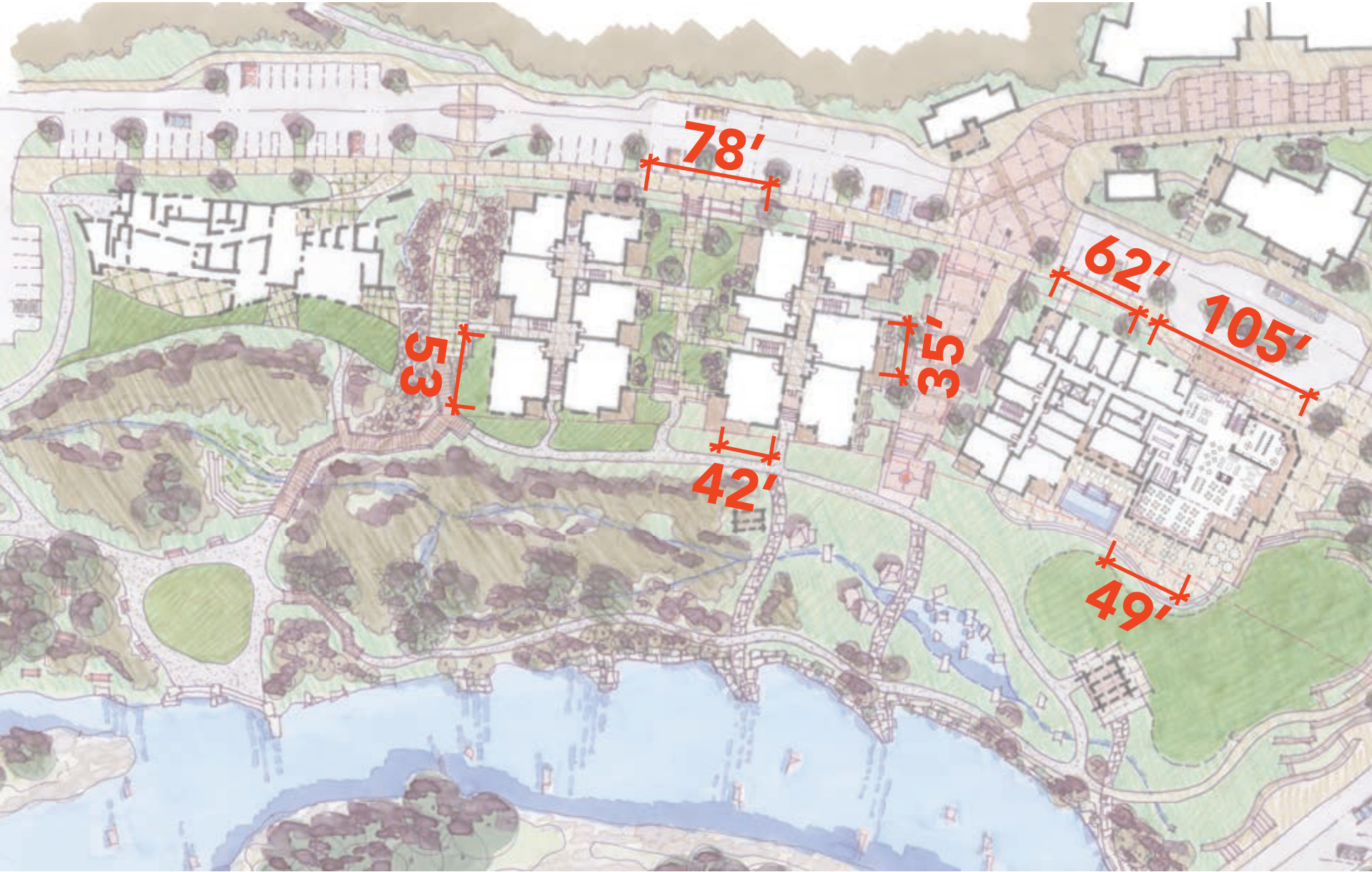


What does it look like; How does it fit in town?

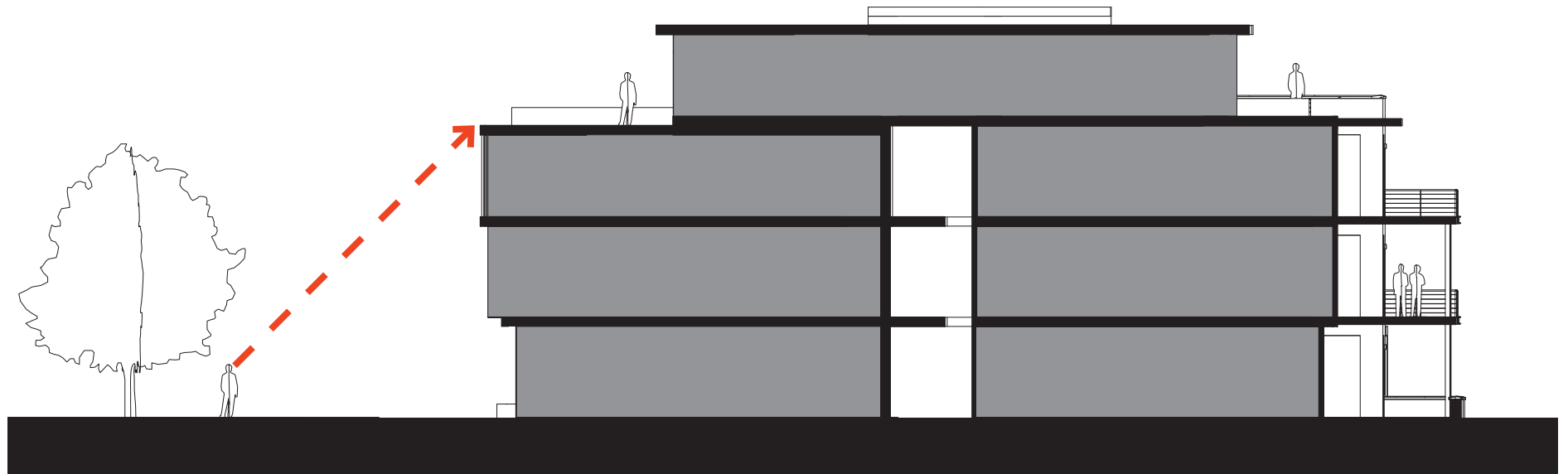
The Buildings



Building 'Grain'



3 1/2 Stories - 4th Floor Set Back



The Wedding Cake

Two Rivers Road at 4-Way Stop



Two Rivers Road at RMI



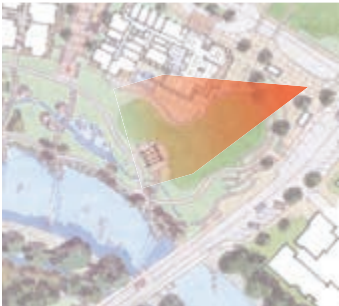
Midland Spur Woonerf



Midland Park



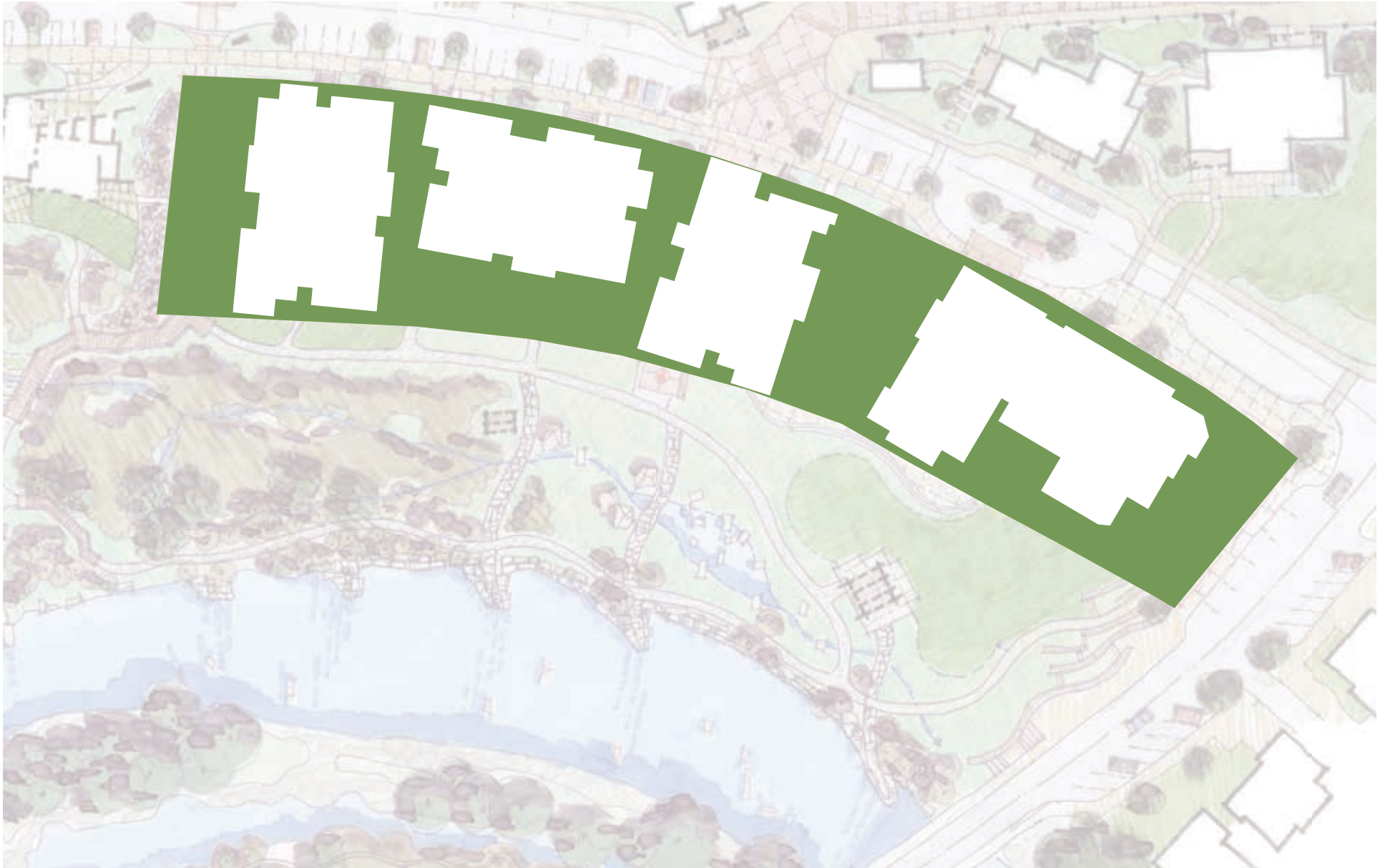
Riverfront Park



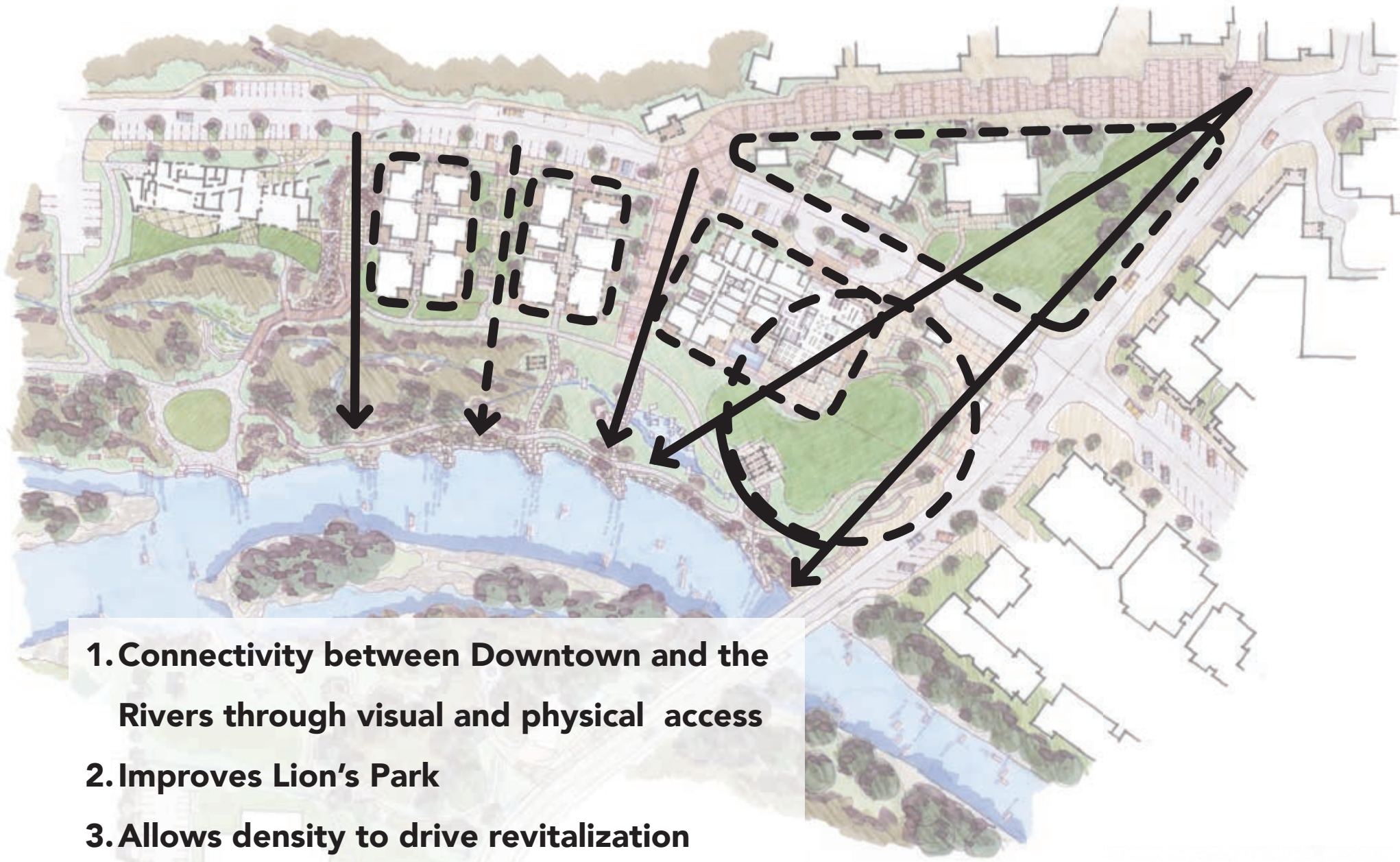
Building Scale



3-Story Alternative

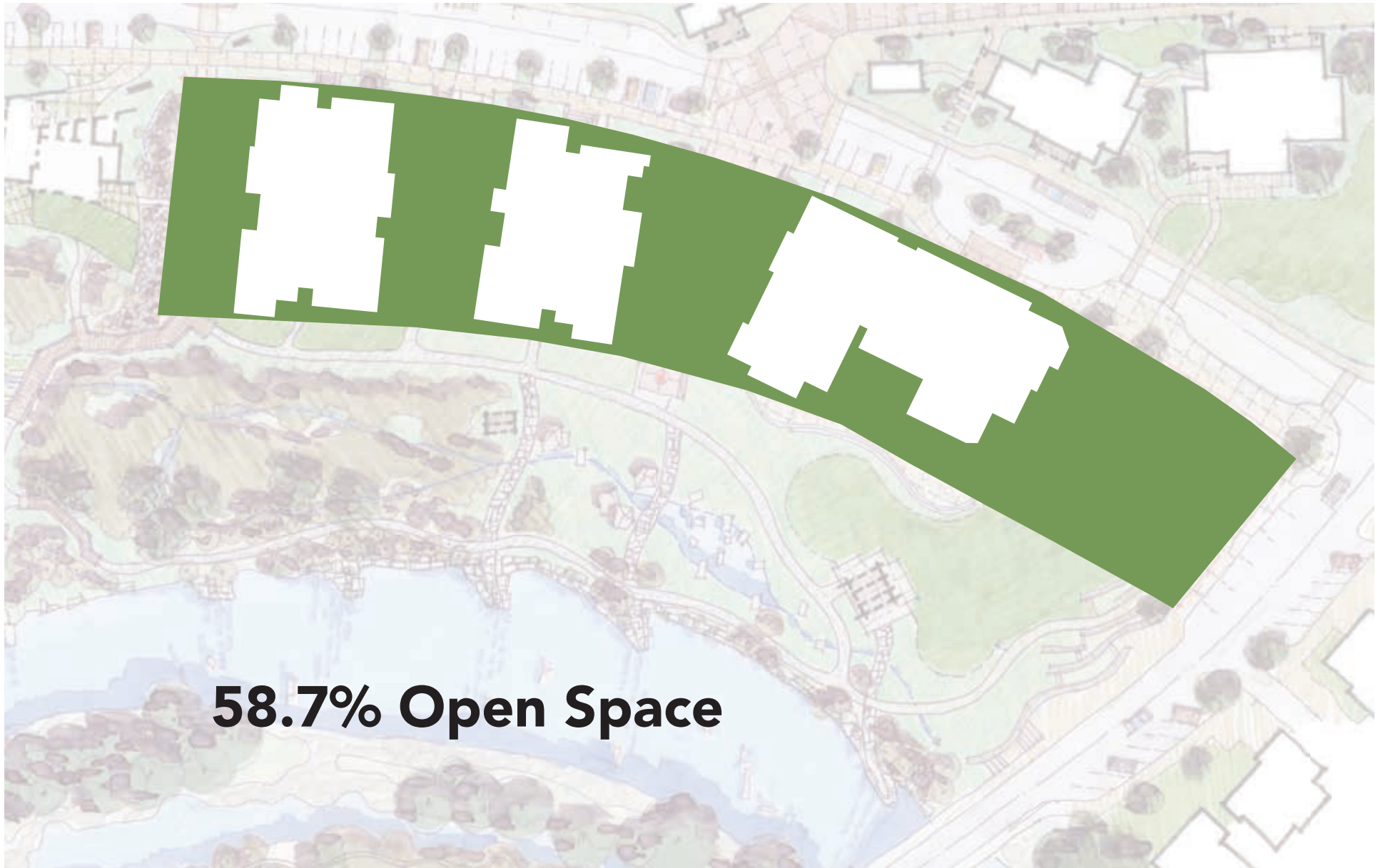


Guiding Principles

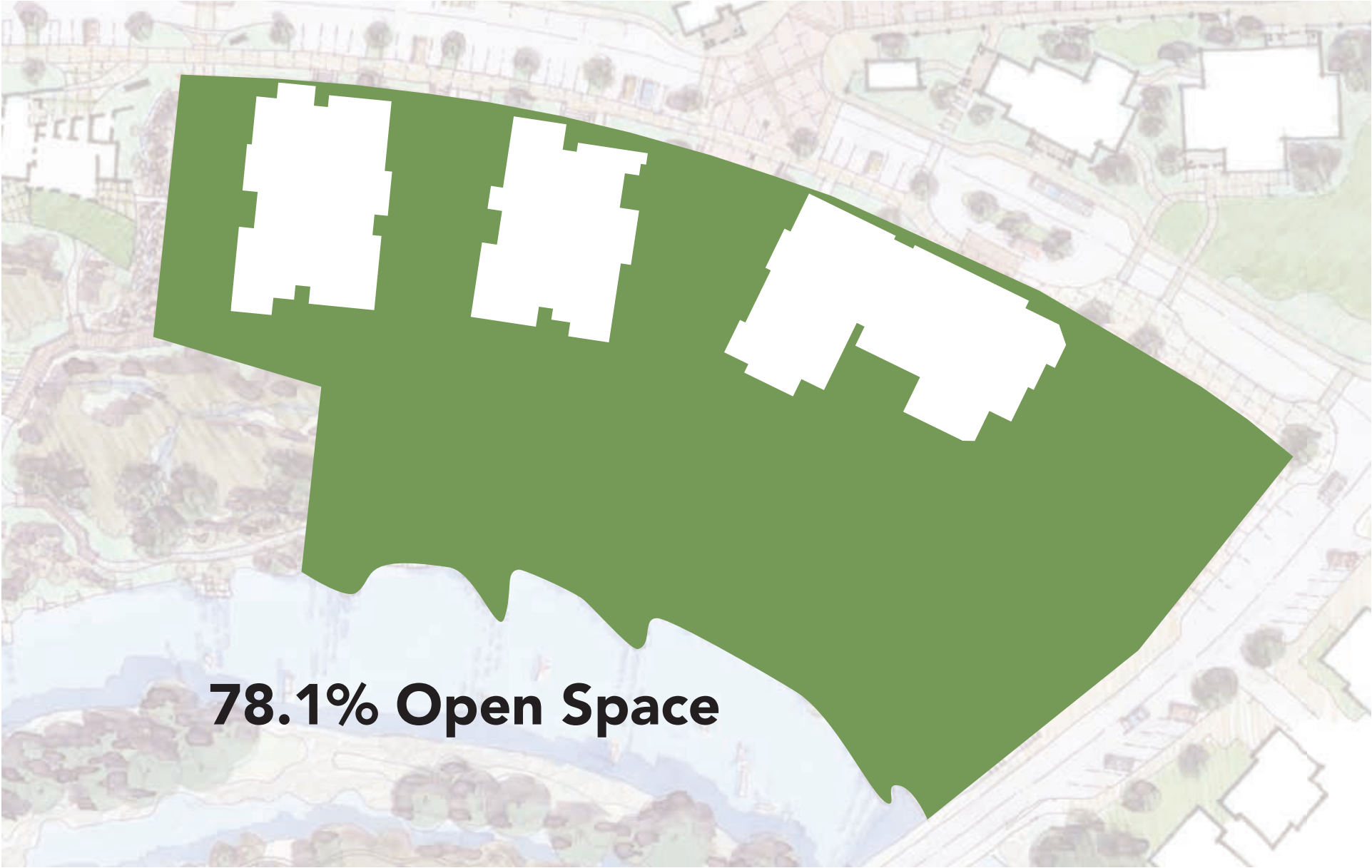


- 1. Connectivity between Downtown and the Rivers through visual and physical access**
- 2. Improves Lion's Park**
- 3. Allows density to drive revitalization**
- 4. Putting the "There-There"**

Open Space



Open Space



78.1% Open Space

Riverfront Park

