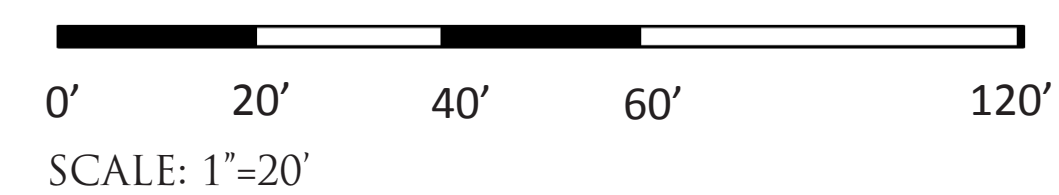
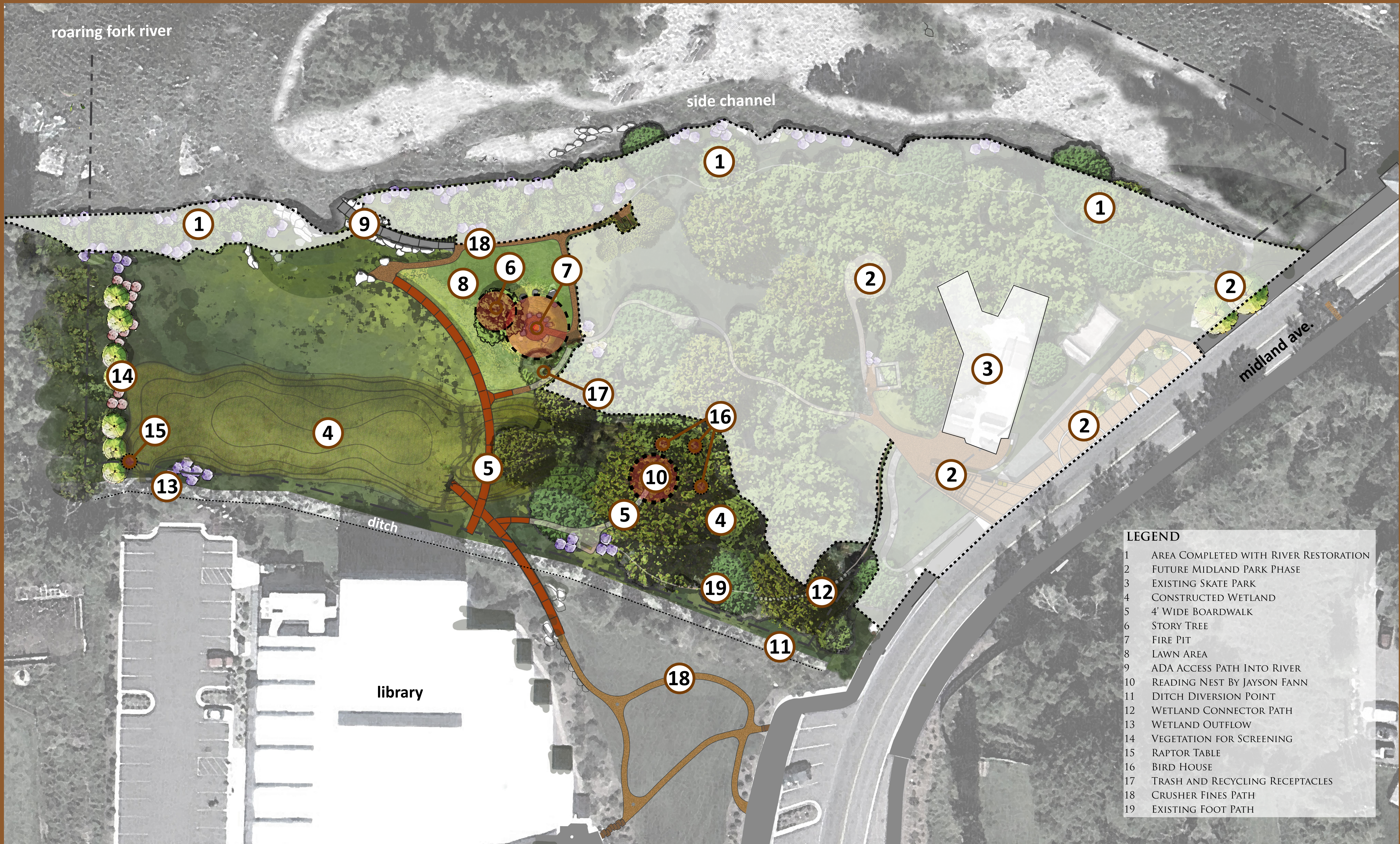




MIDLAND PARK MASTER PLAN

PREPARED FOR: THE TOWN OF BASALT
 DATE: FEBRUARY 2014



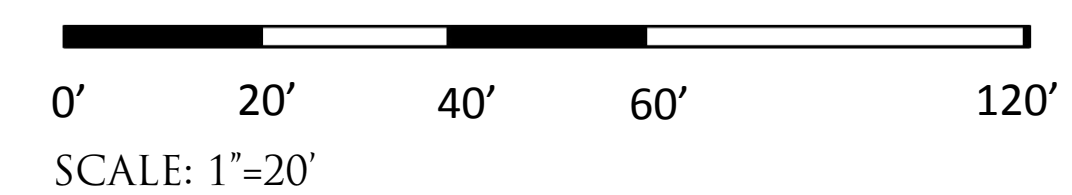


LEGEND

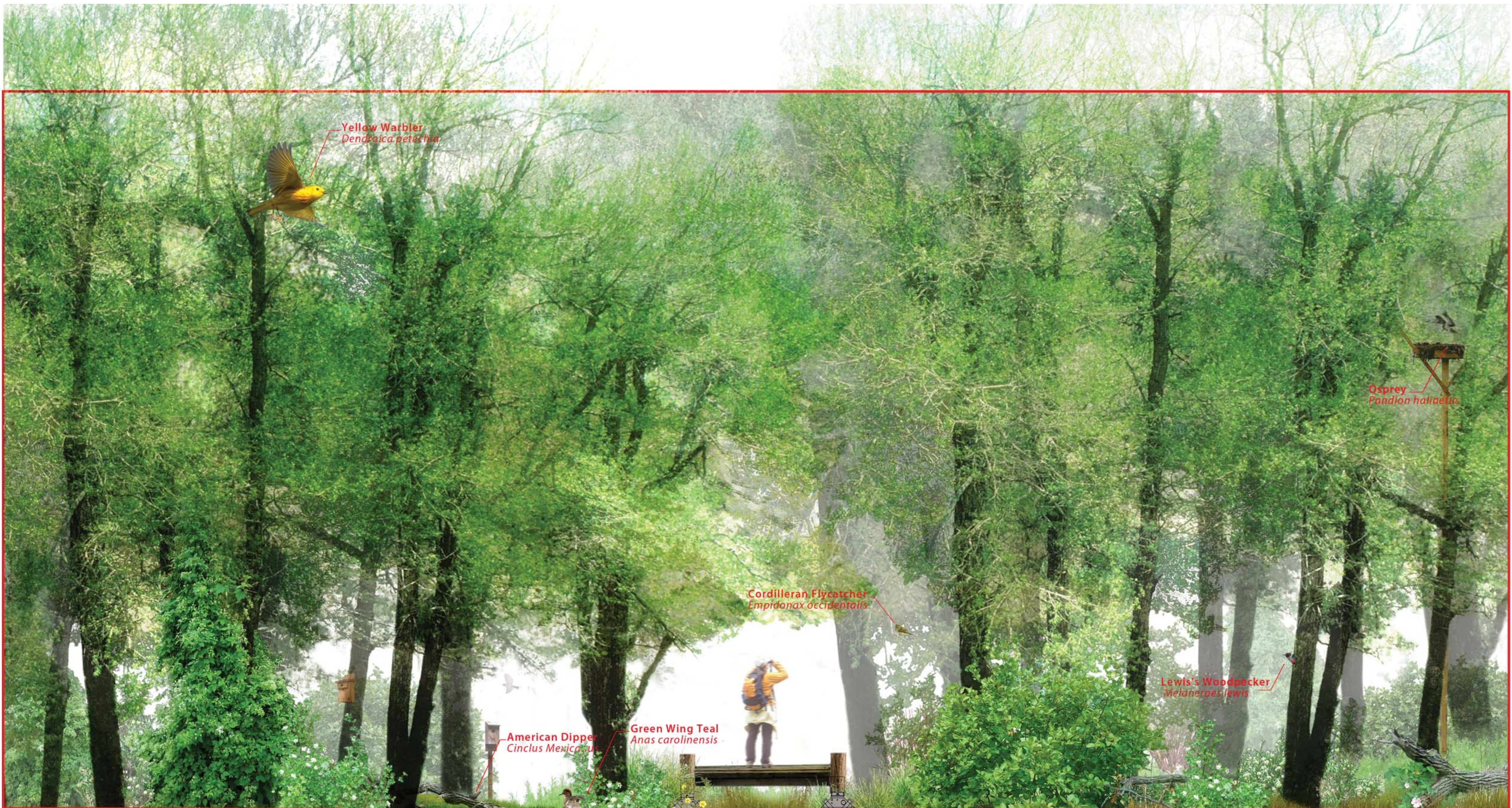
1	AREA COMPLETED WITH RIVER RESTORATION
2	FUTURE MIDLAND PARK PHASE
3	EXISTING SKATE PARK
4	CONSTRUCTED WETLAND
5	4' WIDE BOARDWALK
6	STORY TREE
7	FIRE PIT
8	LAWN AREA
9	ADA ACCESS PATH INTO RIVER
10	READING NEST BY JAYSON FANN
11	DITCH DIVERSION POINT
12	WETLAND CONNECTOR PATH
13	WETLAND OUTFLOW
14	VEGETATION FOR SCREENING
15	RAPTOR TABLE
16	BIRD HOUSE
17	TRASH AND RECYCLING RECEPTACLES
18	CRUSHER FINES PATH
19	EXISTING FOOT PATH

MIDLAND PARK PHASE 1 PLAN

PREPARED FOR: THE TOWN OF BASALT
 DATE: MARCH 2015







Yellow Warbler
Dendroica petechia

Osprey
Pandion haliaetus

Cordilleran Flycatcher
Empidonax occidentalis

Lewis's Woodpecker
Melanerpes lewis

American Dipper
Cinclus Mexicanus

Green Wing Teal
Anas carolinensis

ANAEROBIC WETLAND SOIL
2' SANDY LOAM | 25% TOPSOIL
NATIVE RIVER COBBLE + BOULDERS

NARROWLEAF COTTONWOODS | 20 - 25 YRS GROWTH

CLAY LINER

WOODY UNDERSTORY PLANT SPECIES
Mountain Alder *Alnus tennifolia*
River Birch *Betula occidentalis*
Chokecherry *Prunus virginiana*
Red-osier Dogwood *Cornus sericea*

BIRD SPECIES
American Dipper *Cinclus Mexicanus*
Cordilleran Flycatcher *Empidonax occidentalis*
Wilson Warbler *Tachycineta thalassina*
Yellow Warbler

Mallard *Cinclus Mexicanus*
Great Blue Heron *Empidonax occidentalis*
Osprey *Tachycineta thalassina*

Great Horned Owl *Cinclus Mexicanus*
Green Wing Teal *Empidonax occidentalis*
Lewis's Woodpecker *Melanerpes lewis*

ROARING FORK RIVER ACCESS | RIPARIAN WOODLAND

ILLUSTRATIVE SECTION OF BOARDWALK THROUGH WETLANDS



TERRACE/ OPEN SPACE OPTION



STAGE OPTION



SKATING RINK/ FARMER'S MARKET OPTION



BEER GARDEN OPTION



THERMAL POOL OPTION