

The Gallagher Family
April 9, 2014

I would like to share our family's vision/hopes for Our Town Planning:

(1) Pan & Fork Park: We hope that new river front property can be seen as a huge asset to the Town of Basalt and it's residents. We hope that there will be NO development on this parcel of land other than park, open space and perhaps an amphitheater for music/entertainment. That it will be a place where people can gather and enjoy the river and open space without any development or buildings. Perhaps a kayak park, hills and slides and walkways/benches that invite people of all ages to gather and appreciate the tranquility and beauty of the river without development and businesses. The rivers are such an asset to our community but all their banks are populated by private building fronts. The view planes are obstructed and there is now intention to make them public places to be enjoyed. We hope that this area can be developed into a natural, outdoor community gathering setting and that this beautiful area will not be developed with buildings. We understand that RMI is choosing to build their showcase architecture in this area (which is a shame, when really what we need is someone to demonstrate how to remodel buildings in an energy-efficient manner, as opposed to showing how to build more structures by building on precious open space).

(2) Basalt Center: We hope that downtown Basalt can find an identity that makes it unique from Willits. Perhaps no chain store development and a focus on green, small, progressive, locally-owned businesses in a setting on the river that values open space and community gathering areas. An anchor grocery store (from a boutique chain) may be needed to generate vitality, but beyond that we favor small businesses and all new development off the riverfront, across Two Rivers Road. Perhaps reducing driveway entrances into Basalt Center Circle to promote bike and pedestrian friendliness. In order to promote business on the east end of Midland Avenue, new business development should be on the east side of Two Rivers road to concentrate business and not spread into this valuable, unique open space.

(3) A pedestrian bridge that attaches the Pan & Fork Park to the new park in front of the Library would a beautiful way to expand the open space concept.

(4) Triangle Park: Currently the home of local government, but perhaps local government should move and allow this park to have community focused buildings for art/music/Farmer's market/etc, such as the Wyly.

(5) Skate park: Would be wonderful to put a high-quality skate park, similar to those in Aspen, Snowmass Village, and Carbondale to provide healthy outdoor activities for our youth.

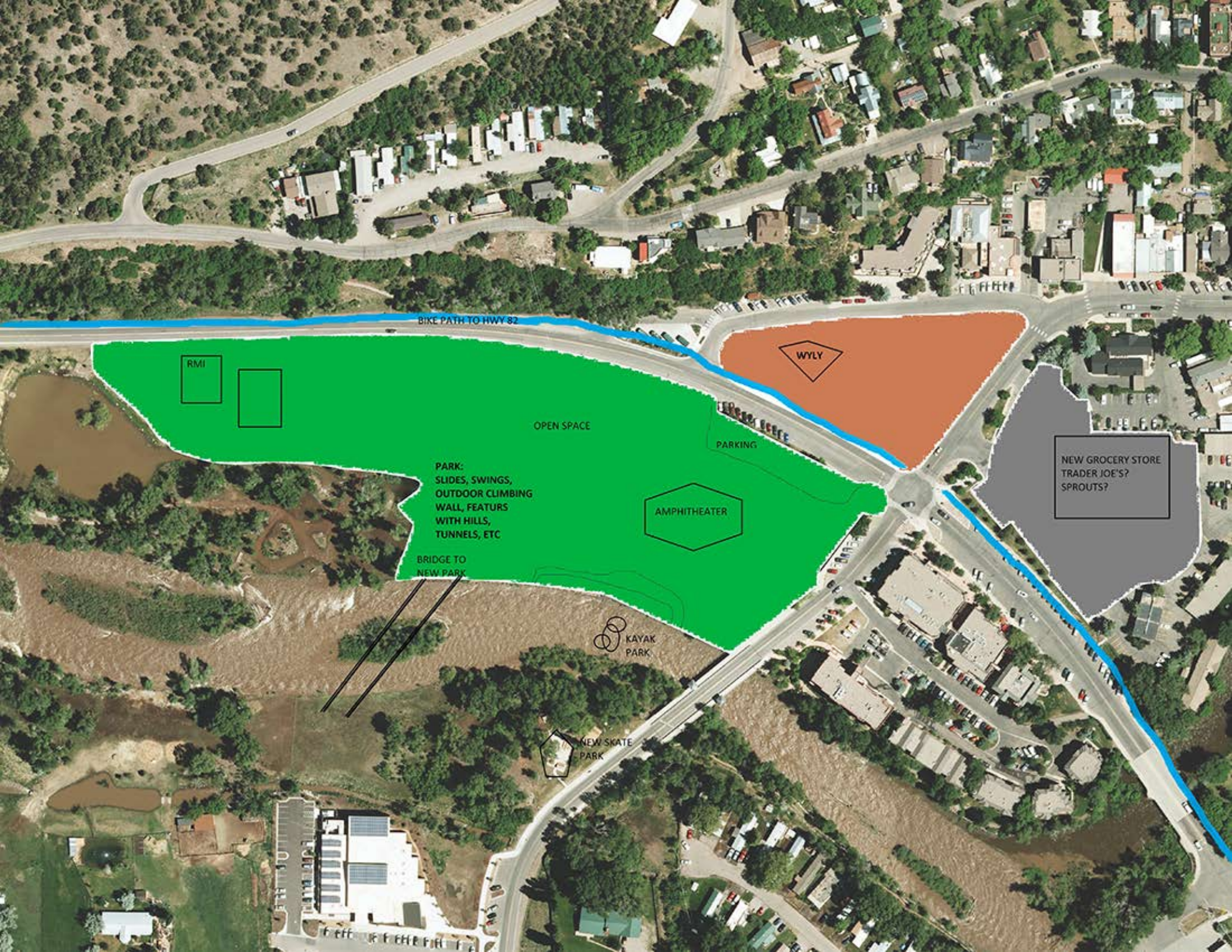
(6) Hotel: While a nice hotel in town might be good to bring in business, it should not take valuable space anywhere in the Pan & Fork Park. Possibly, this could happen at the Basalt Center or Triangle Park, but a generic medium quality box in town is not what this town needs to set itself apart from neighboring communities. Quaint, small, green, livable, progressive...these might be qualities we strive to attain to define our community.

(7) Bike lanes: Making bikes lanes along Two Rivers road west toward Hwy 82 would be an asset to the community.

(8) Art: promote progressive local artists, similar to Carbondale, with street art and a move away from railroad ties, fisherman and trains.

(9) New entrance to Town: A priority must be given to how entering this Town feels. Currently it is circuitous, unattractive (although the efforts of the Town gardener are greatly appreciated) and appears unplanned.

Sincerely,
Scott, Risoun, Nakiri & Devi Gallagher
Basalt Colorado 81621



BIKE PATH TO HWY 82

RMI

OPEN SPACE

PARK:
SLIDES, SWINGS,
OUTDOOR CLIMBING
WALL, FEATURS
WITH HILLS,
TUNNELS, ETC

AMPHITHEATER

BRIDGE TO
NEW PARK

WYLY

PARKING

NEW GROCERY STORE
TRADER JOE'S?
SPROUTS?

KAYAK
PARK

NEW SKATE
PARK