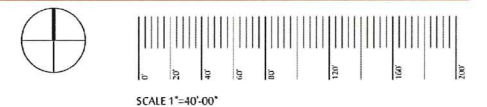




"OUR TOWN"
TOWN OF BASALT COLORADO



Genny Terwilliger

Ⓟ
Parking



no cars on two Rivers rd
past Homestead drive.
Recreation area
x-country Skiing
Dog walking
Biking
Trail loop

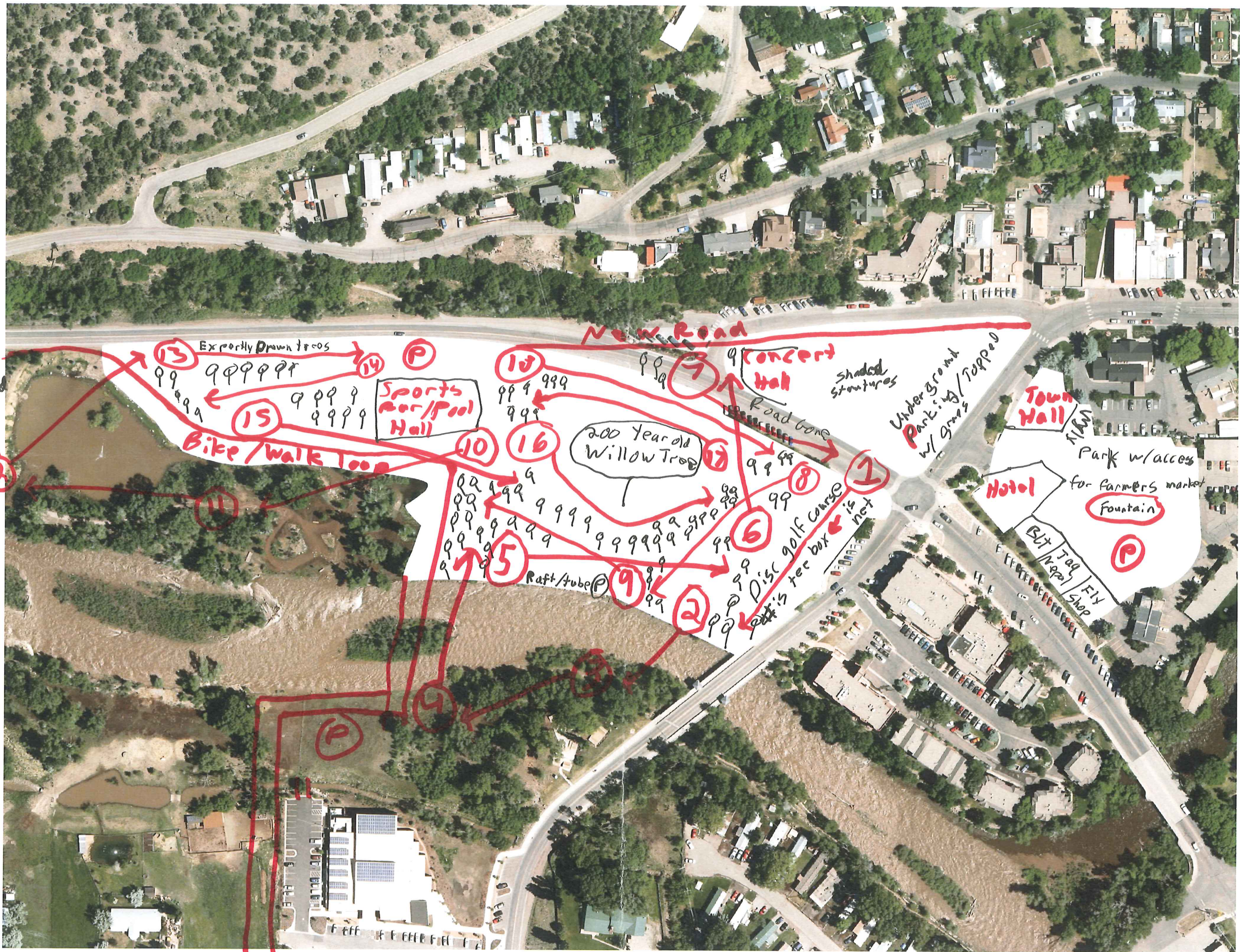
Park with
trees and
statues
similar to
John Denver
Park
River Access

Change into park
with open concert
venue. No structures
except train car
Playground

Town Hall
Retail
Retail
Retail
Retail



No ~~car~~ motorized vehicles
Past homestead
Road becomes part of loop
for biking
dog walking
X-country
skiing



Expertly Drawn trees

Sports Bar/Pool Hall

200 Year old Willow Tree

Concert Hall

Shaded structures

Underground Parking w/ ramps

Town Hall

Hotel

Park w/access for farmers market

Fountain

But Tag Shop

Bike/Walk Loop

Raft/tube

Disc golf course
tee box

Road gone



RFC

RMI

ART CENTER

HOTEL

SKATE

1/2 mile / event booth row

open

OPEN SPACE

RETAIL

RE

Housing
park / mountain

PARK & MOUNTAIN

ART CENTER

retail

1600 sq ft

OPEN SPACE

retail

RETAIL

PHYSICS

Town Hall

Commercial
retail

Housing

HOTEL

rival park
connecting
"grandstands"
kayak

KAYAK PK

Foot
path

Commercial

Foot
path

GRAND STANDS
KAYAK PK

KAYAK PK



Site 1
Site 2

HOTEL/CONFERENCE
EVENT CENTER

PARKING

PERFORMING
ARTS

PLAZA

WILLY

T.H.

GRASSY

AFM

REMA
PARK
AH.

PARK
BRIDGE

WATER
FEATURES
ICEBANK

FISHING
get the park