

PITKIN COUNTY



HEALTHY RIVERS

WHITEWATER PROJECT

Roaring Fork River
Basalt, CO

In partnership with



Project Update

(February 8th, 2016)

1. The design of the Recreational In-Channel Diversion (RICD) structures is complete. This includes all in-stream work associated with the project.
2. Currently collecting public comments & ideas for stream-side amenities.
3. Tonight:
 - Sharing results of the 1st round of public comments
 - Kicking off a 2nd round of public comments

In the near future...

- All community suggestions for streamside amenities will be evaluated for site suitability/feasibility/cost.
- Selected amenities will inform a streamside design that integrates with the RICD structures and the Two Rivers Road Master Plan, and addresses all public safety considerations.

BACKGROUND



TO ASPEN

FRYINGPAN
RIVER

ROARING FORK
RIVER

HEALTHY RIVERS
PROJECT SITE

DOWNTOWN
BASALT

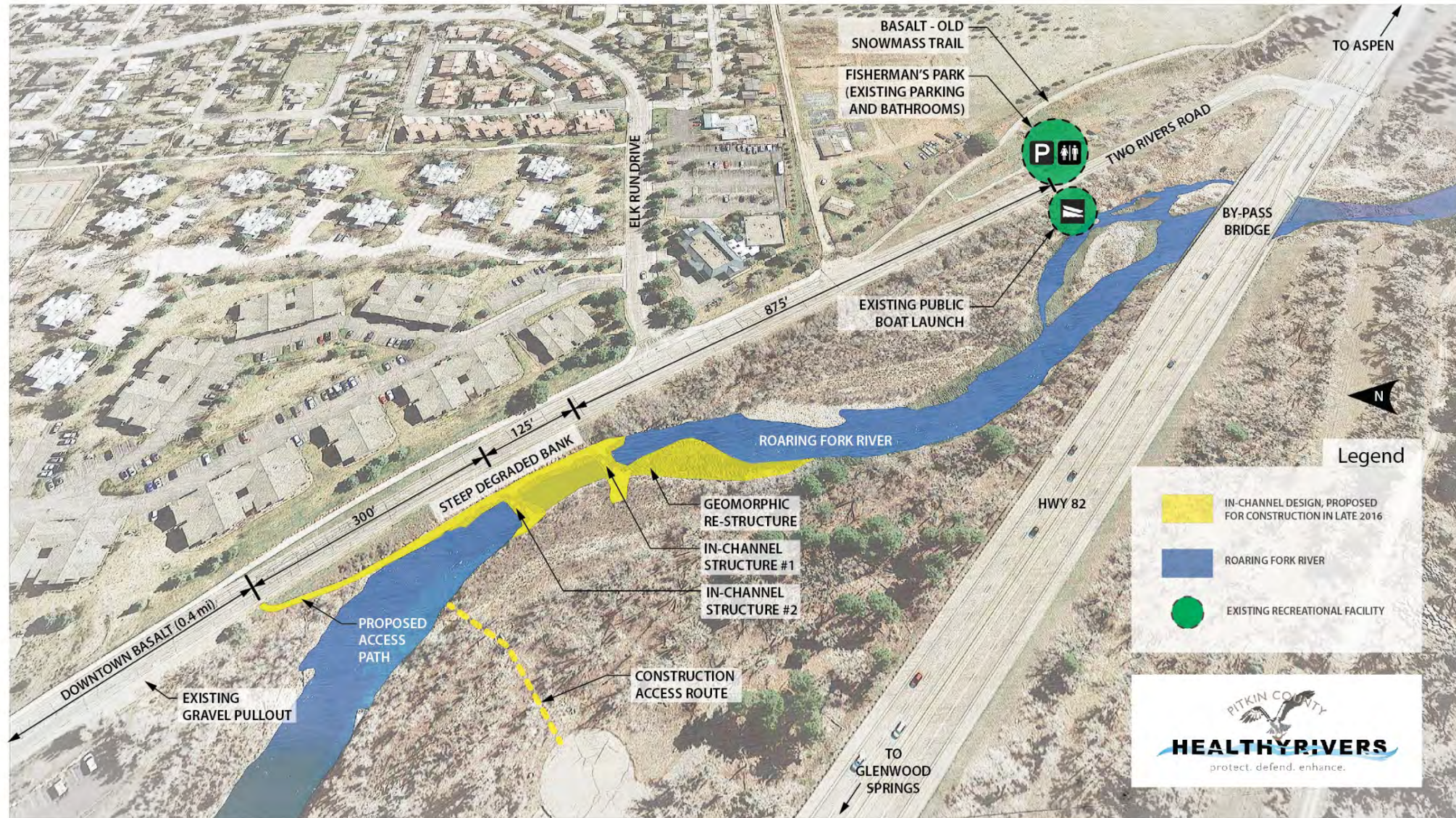
HWY. 82

TO GLENWOOD

Google™ earth

Image Landsat

Project Site



Proposed Site

TWO RIVERS ROAD

DEGRADED RIVER BANK






BASALT
Police Department
200 W. Main St. Basalt, CO 81611
24/7

THE QUESTION

Keep it simple... or... create an event space?



Keep it Simple (restore native banks, minimal access/spectating, parking @ Fisherman's)



Create an event space (close parking, spectator seating/viewing platforms, ADA access to water)

PUBLIC RESPONSE

Respondents

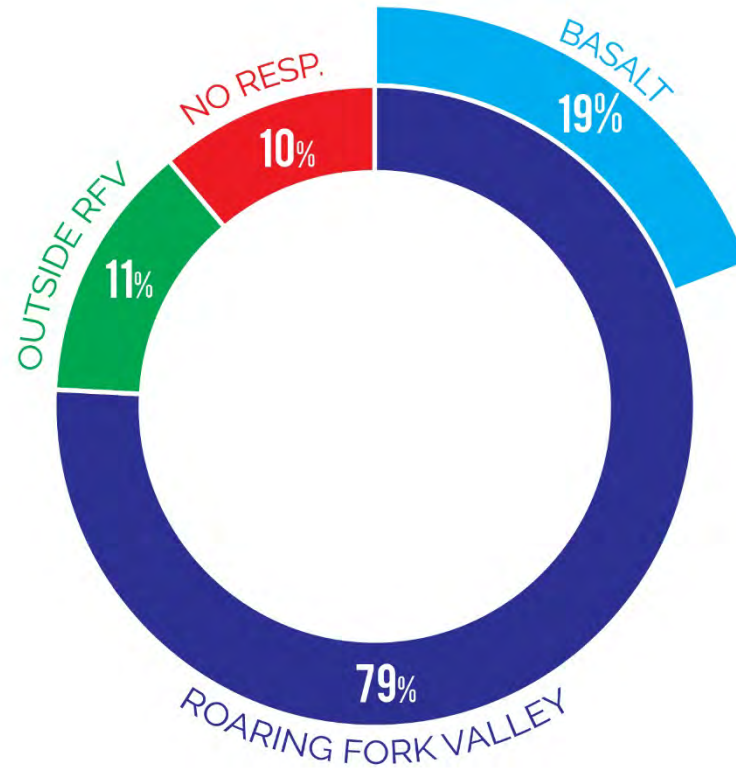
52 Individual Citizens

Roaring Fork Conservancy

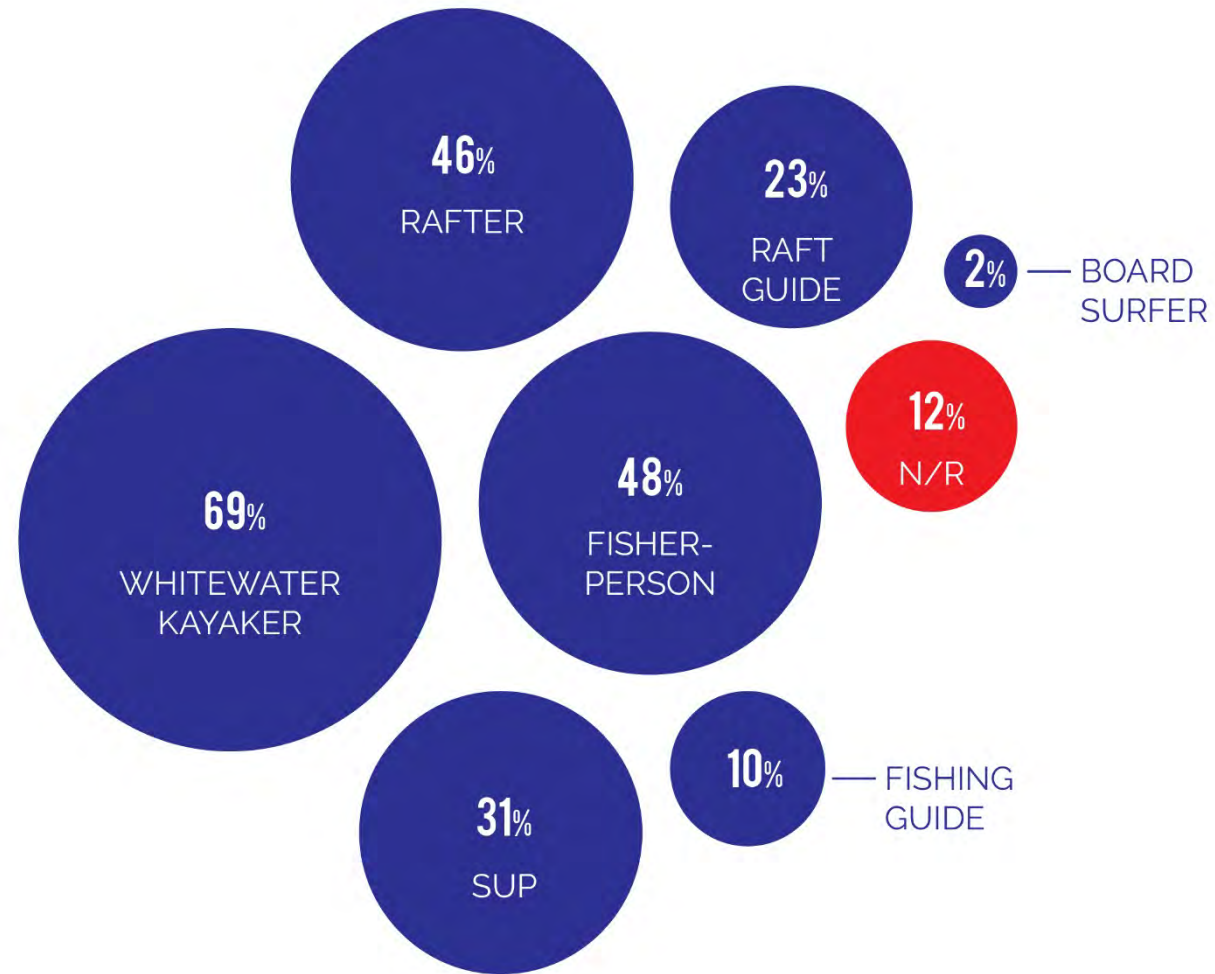
Roaring Fork Fishing Guide Alliance

Basalt Public Safety

Respondent Residency



Respondent River Use



Project Support

94%

SUPPORT THE PROJECT / OFFERED CONSTRUCTIVE INPUT

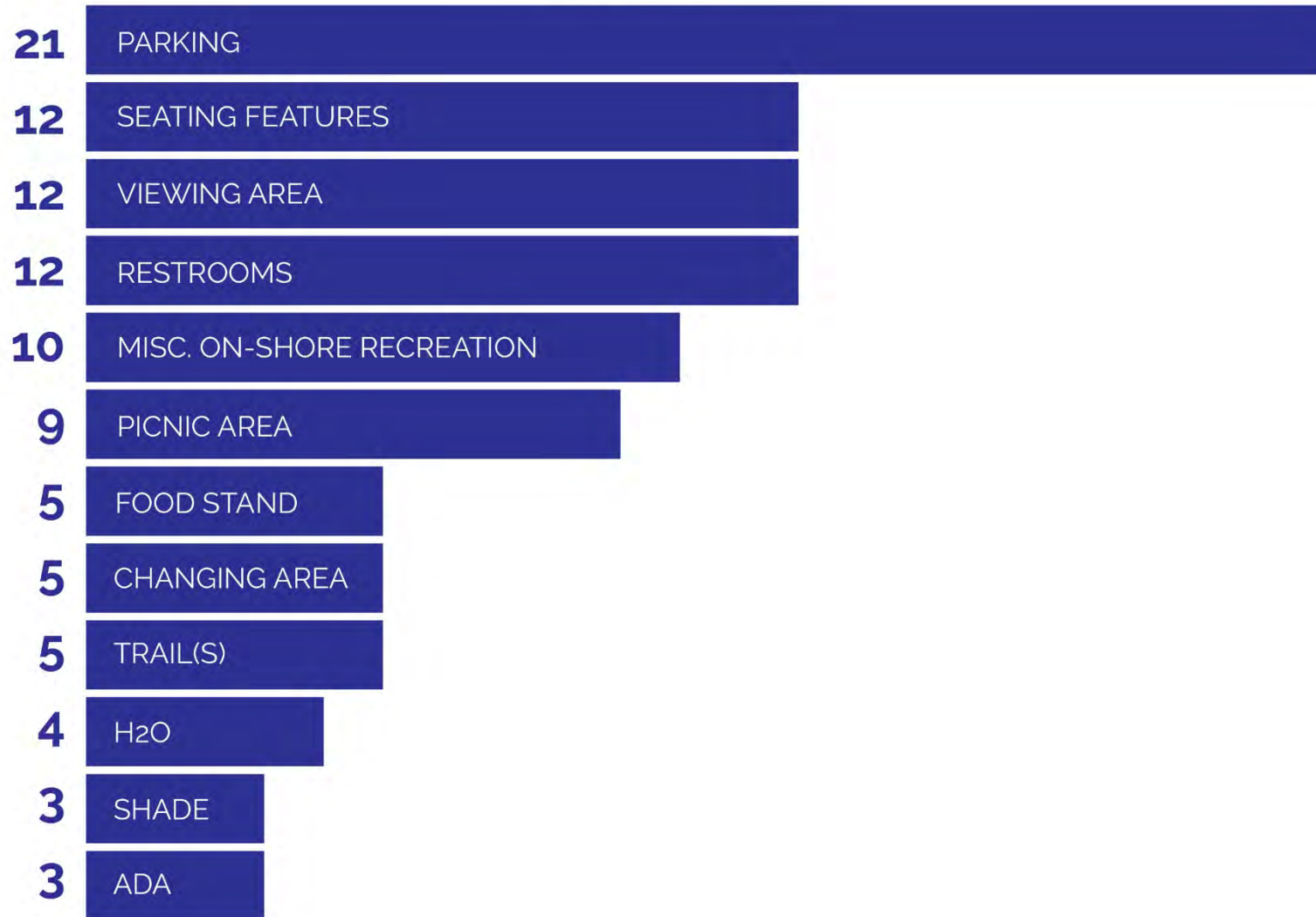
6%

DISAPPROVE OF THE PROJECT



Streamside Amenities

(by # of suggestions)

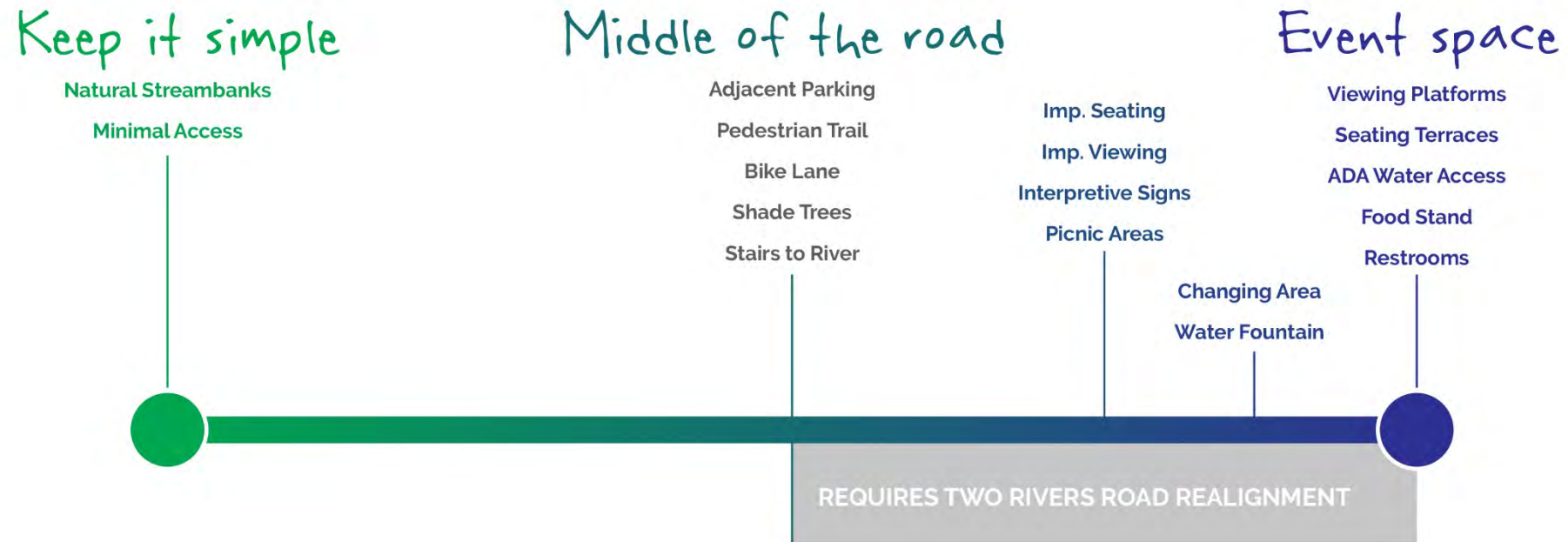


Prevalent Comment Themes

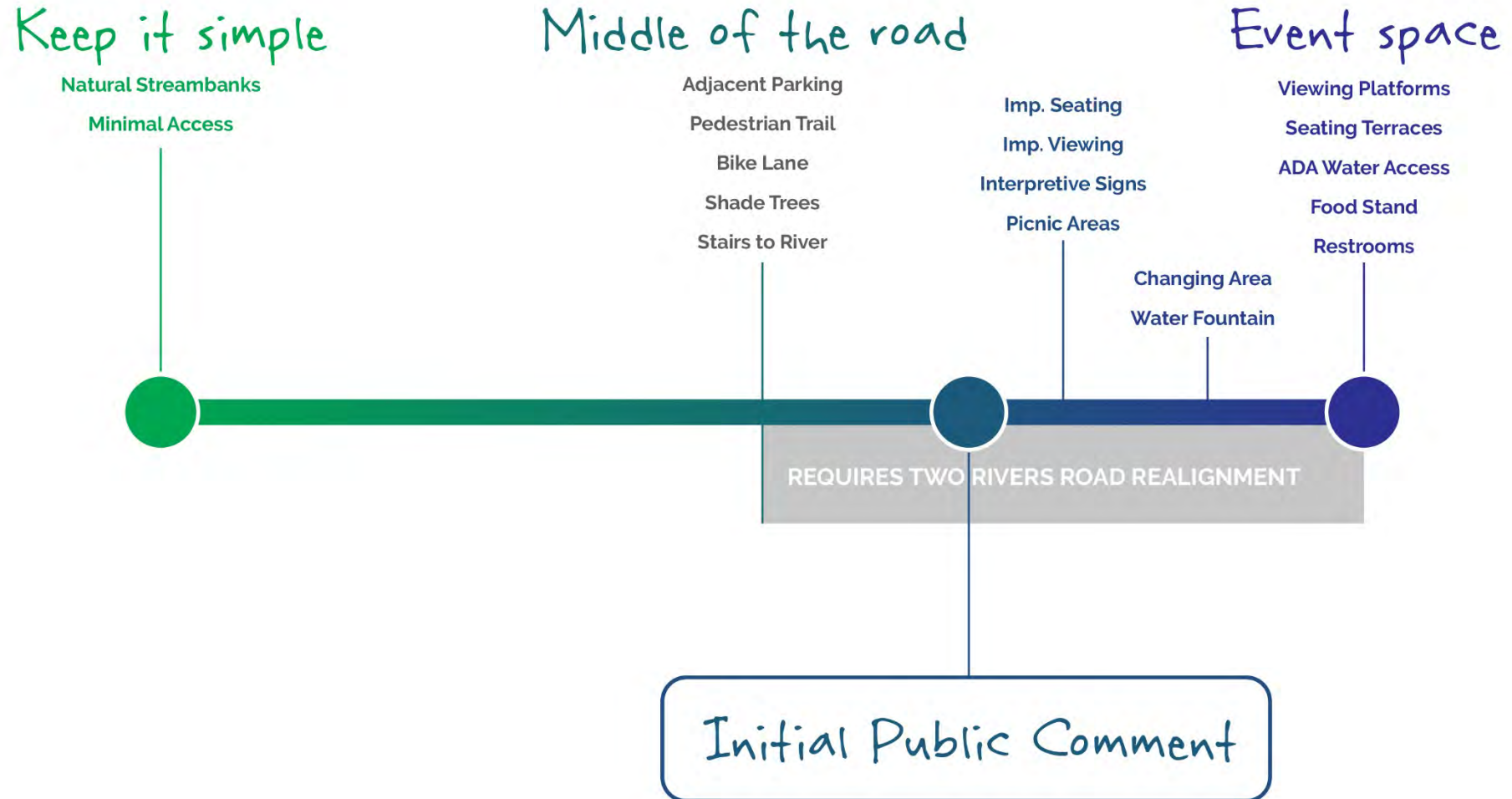
- 1) Create opportunities for non-boaters to engage the river & park.
- 2) Provide convenient parking and whitewater feature access.
- 3) Leverage the park as a tourism anchor.
- 4) Design for healthy river and riparian ecology.
- 5) Address public safety and accessibility concerns.

ANALYSIS

Streamside Amenities Spectrum



Streamside Amenities Spectrum



DESIGN IMPLICATIONS

Incorporate...

- convenient **parking** adjacent to RICD features
- improved **seating, viewing,** and **shaded** areas
- direct streamside **access**
- **interpretive elements** that promote river stewardship
- multi-use **programming** (recreation, education)

Take advantage of opportunities to...

- **restore** degraded streambanks
- **protect** riparian habitat
- **improve** in-stream habitat

Study...

- adding **water's edge ADA access** at Fisherman's Park and adjacent to RICD features.
- suitable **restroom** and **changing room** location options.
- adding a **picnic area** on the river-left bank adjacent to RICD features
- **staging** and **parking** concerns at Fisherman's Park

Address...

- **public safety** and **accessibility** concerns
(based on the final list of selected amenities)

A NEW QUESTION

~~Keep it simple...or... create an event space?~~

Middle of the road?



Approach 1: Keep it Simple (restore native banks, minimal access/spectating, parking @ Fisherman's)



Approach 3: Event Space (nearby parking, spectator seating/viewing platforms, ADA access to water)



Approach 2: Middle of the Road (convenient parking, stair access, informal seating/viewing)

ANSWERS

Will the project be sensitive to the fishery and adjacent riparian habitats?

Will the RICD structures
allow fish to pass upstream?

Will the waves formed by the RICD structures
allow dories and rafts to pass downstream?

Will the Fisherman's Park boat launch be improved?

Will trailered parking and staging concerns
at Fisherman's park be addressed?

Can the project be moved downstream to the
7-Eleven bridge or below the Confluence with the Fryingpan?
Can additional in-stream features be explored?

When will construction occur?
When will the whitewater park open?

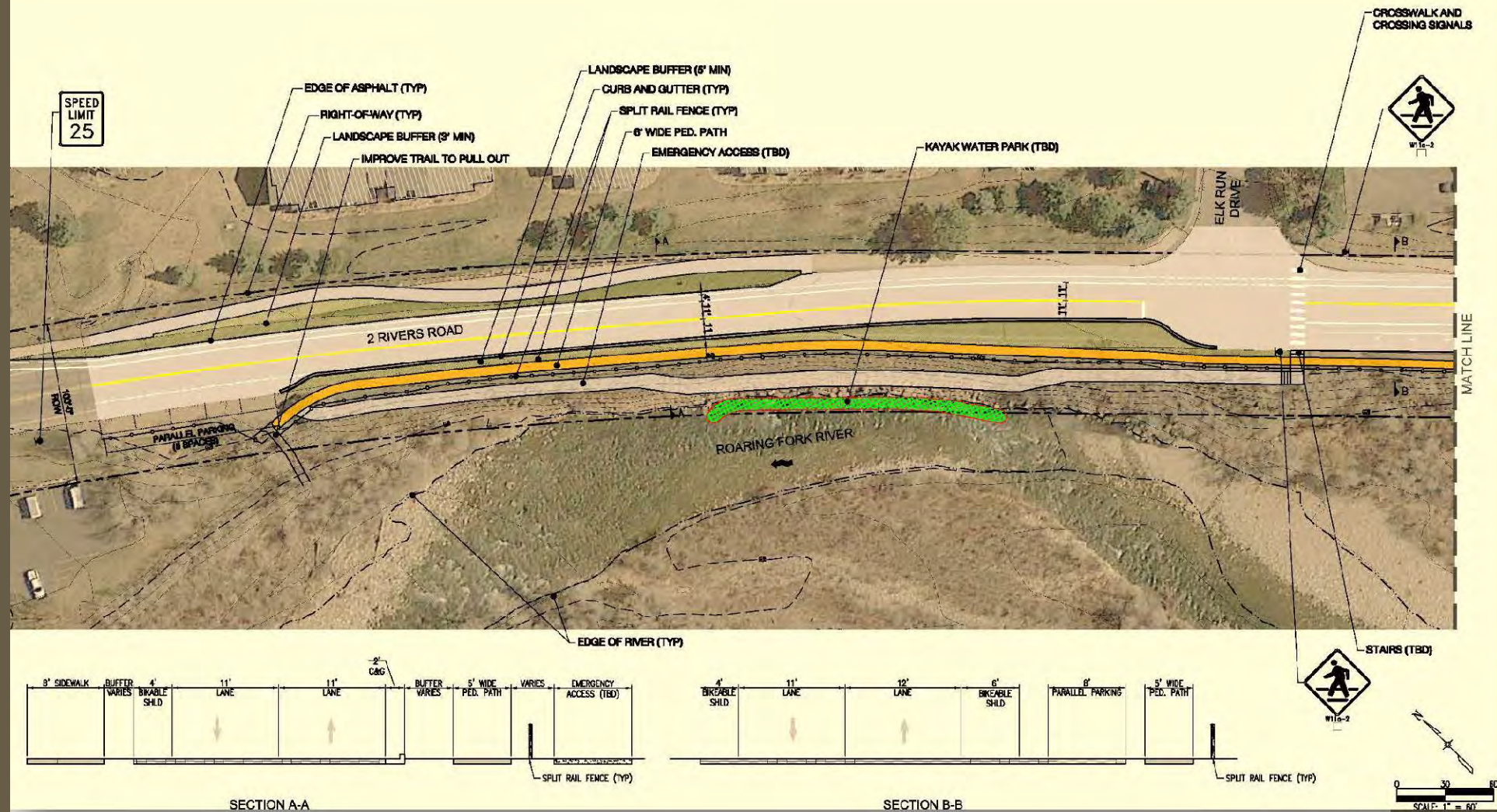
How will the whitewater park project integrate with the Two Rivers Road Master Planning project?

WHITEWATER PARK





WHITEWATER PARK (FIGURE 5B)





NEXT STEPS?

Please share your ideas!



Approach 1:
Keep it Simple



Approach 2:
Middle of the Road




Approach 3:
Event Space


Help us select the type, location, and scope of streamside amenities

In the near future...

- All community suggestions for streamside amenities will be evaluated for site suitability/feasibility/cost.
- Selected amenities will inform a streamside design that integrates with the RICD structures and the Two Rivers Road Master Plan, and addresses all public safety considerations.

A person in a blue kayak is navigating a river with rapids. The water is dark blue with white foam from the rapids. The river is bordered by rocky banks and bare trees in the background. The text "It's our river. Let's make it right." is overlaid on the image in a white, handwritten font.

It's our river.
Let's make it right.



LEARN MORE & SUBMIT COMMENTS AT:

PITKINCOUNTYRIVERS.COM